

**APPENDIX A**  
**PHOTOGRAPHS OF**  
**STREAMFLOW SURVEYS**  
**AND RIVER CONDITIONS**



**STREAMFLOW MONITORING STATION NOS. 1 AND 2**  
**MAY 3, 2012**  
**Ventura River Surface Water/Groundwater Interaction Study**  
City of San Buenaventura  
Foster Park, California





**STREAMFLOW MONITORING STATION NOS. 3 AND 4**  
**MAY 3, 2012**  
**Ventura River Surface Water/Groundwater Interaction Study**  
City of San Buenaventura  
Foster Park, California

SFMS NO. 1

PHOTOGRAPH  
NOT AVAILABLE

SFMS NO. 1A



**STREAMFLOW MONITORING STATION NOS. 1 AND 1A**  
**MAY 10, 2012**  
**Ventura River Surface Water/Groundwater Interaction Study**  
City of San Buenaventura  
Foster Park, California





**STREAMFLOW MONITORING STATION NOS. 2 AND 3**  
**MAY 10, 2012**  
**Ventura River Surface Water/Groundwater Interaction Study**  
City of San Buenaventura  
Foster Park, California





**STREAMFLOW MONITORING STATION NO. 4 AND 4A**  
**MAY 10, 2012**  
**Ventura River Surface Water/Groundwater Interaction Study**  
City of San Buenaventura  
Foster Park, California





**STREAMFLOW MONITORING STATION NOS. 1 AND 1A**  
**MAY 17, 2012**  
**Ventura River Surface Water/Groundwater Interaction Study**  
City of San Buenaventura  
Foster Park, California





**STREAMFLOW MONITORING STATION NOS. 2 AND 3**  
**MAY 17, 2012**  
**Ventura River Surface Water/Groundwater Interaction Study**  
City of San Buenaventura  
Foster Park, California





**STREAMFLOW MONITORING STATION NO. 4 AND 4A**  
**MAY 17, 2012**  
**Ventura River Surface Water/Groundwater Interaction Study**  
City of San Buenaventura  
Foster Park, California





**STREAMFLOW MONITORING STATION NOS. 1 AND 1A**  
**MAY 18, 2012**  
**Ventura River Surface Water/Groundwater Interaction Study**  
City of San Buenaventura  
Foster Park, California





**STREAMFLOW MONITORING STATION NO. 4 AND 4A**  
**MAY 18, 2012**  
**Ventura River Surface Water/Groundwater Interaction Study**  
City of San Buenaventura  
Foster Park, California





**STREAMFLOW MONITORING STATION NOS. 1 AND 1A**  
**MAY 24, 2012**  
**Ventura River Surface Water/Groundwater Interaction Study**  
City of San Buenaventura  
Foster Park, California





**STREAMFLOW MONITORING STATION NOS. 2 AND 3**  
**MAY 24, 2012**  
**Ventura River Surface Water/Groundwater Interaction Study**  
City of San Buenaventura  
Foster Park, California





**STREAMFLOW MONITORING STATION NO. 4 AND 4A**  
**MAY 24, 2012**  
**Ventura River Surface Water/Groundwater Interaction Study**  
City of San Buenaventura  
Foster Park, California





**STREAMFLOW MONITORING STATION NOS. 1 AND 1A**  
**MAY 31, 2012**  
**Ventura River Surface Water/Groundwater Interaction Study**  
City of San Buenaventura  
Foster Park, California





**STREAMFLOW MONITORING STATION NOS. 2 AND 3**  
**MAY 31, 2012**  
**Ventura River Surface Water/Groundwater Interaction Study**  
City of San Buenaventura  
Foster Park, California





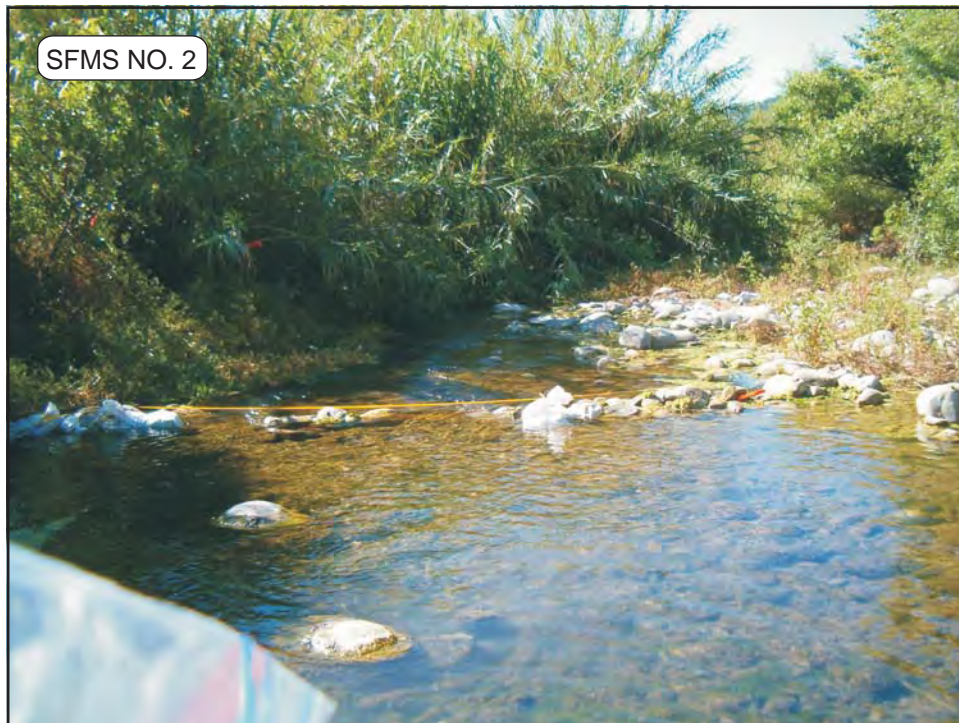
**STREAMFLOW MONITORING STATION NO. 4 AND 4A**  
**MAY 31, 2012**  
**Ventura River Surface Water/Groundwater Interaction Study**  
City of San Buenaventura  
Foster Park, California





**STREAMFLOW MONITORING STATION NOS. 1 AND 1A**  
**JUNE 7, 2012**  
**Ventura River Surface Water/Groundwater Interaction Study**  
City of San Buenaventura  
Foster Park, California





**STREAMFLOW MONITORING STATION NOS. 2 AND 3**  
**JUNE 7, 2012**  
**Ventura River Surface Water/Groundwater Interaction Study**  
City of San Buenaventura  
Foster Park, California





**STREAMFLOW MONITORING STATION NO. 4 AND 4A**  
**JUNE 7, 2012**  
**Ventura River Surface Water/Groundwater Interaction Study**  
City of San Buenaventura  
Foster Park, California





**STREAMFLOW MONITORING STATION NOS. 1 AND 1A**  
**JUNE 14, 2012**  
**Ventura River Surface Water/Groundwater Interaction Study**  
City of San Buenaventura  
Foster Park, California





**APPROXIMATE VICINITY OF USGS FIELD  
STREAMFLOW MONITORING STATION  
JUNE 14, 2012  
Ventura River Surface Water/Groundwater Interaction Study  
City of San Buenaventura  
Foster Park, California**





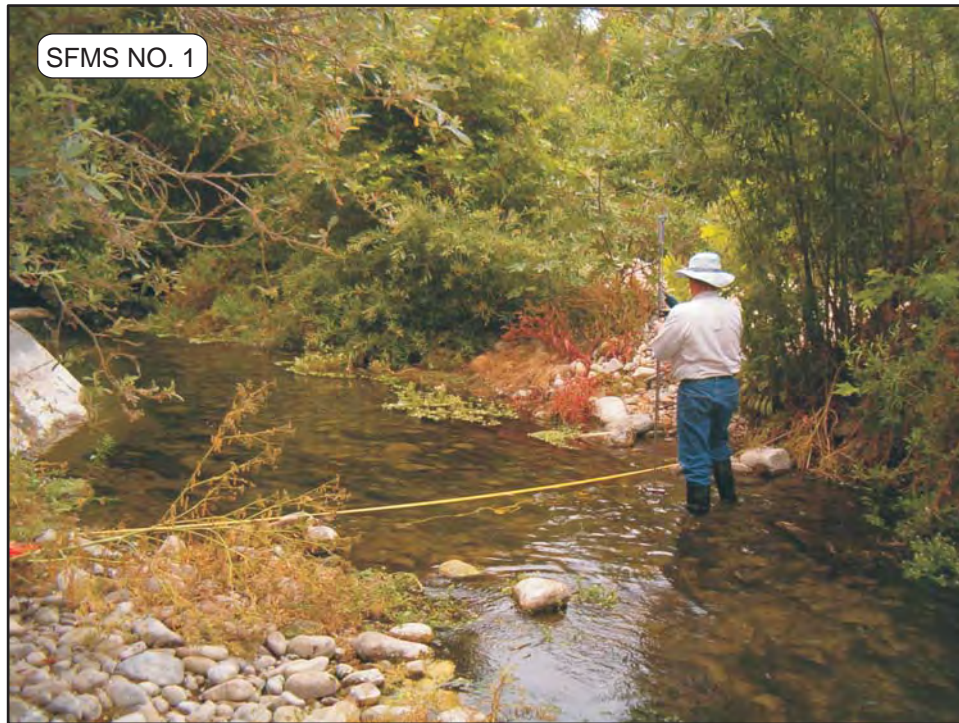
**STREAMFLOW MONITORING STATION NOS. 2 AND 3**  
**JUNE 14, 2012**  
**Ventura River Surface Water/Groundwater Interaction Study**  
City of San Buenaventura  
Foster Park, California





**STREAMFLOW MONITORING STATION NOS. 4 AND 4A**  
**JUNE 14, 2012**  
**Ventura River Surface Water/Groundwater Interaction Study**  
City of San Buenaventura  
Foster Park, California





**STREAMFLOW MONITORING STATION NO. 1**  
**JUNE 21, 2012**  
**Ventura River Surface Water/Groundwater Interaction Study**  
City of San Buenaventura  
Foster Park, California





**STREAMFLOW MONITORING STATION NOS. 2 AND 3**  
**JUNE 21, 2012**  
**Ventura River Surface Water/Groundwater Interaction Study**  
City of San Buenaventura  
Foster Park, California





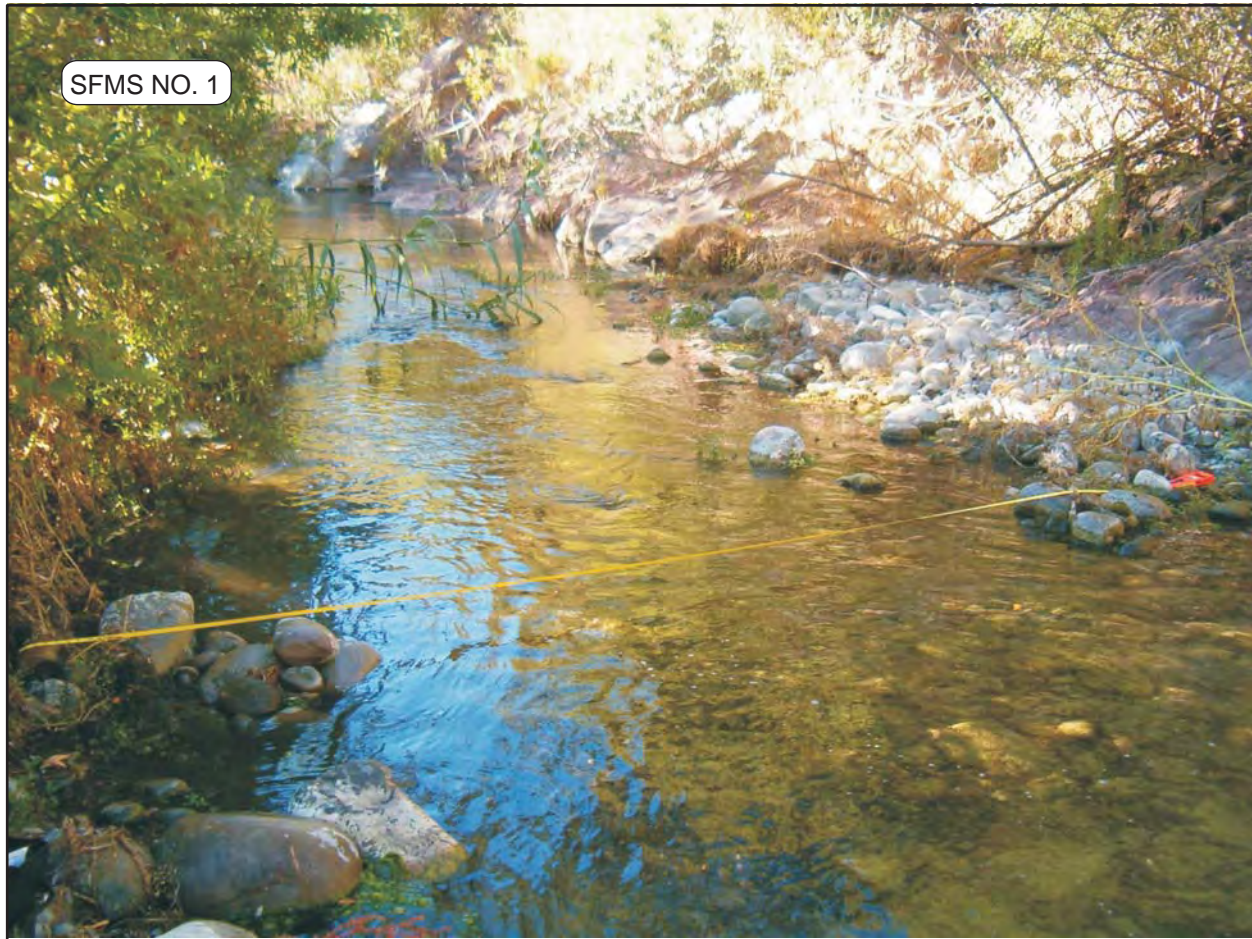
SFMS NO. 4A

NOT AVAILABLE

**STREAMFLOW MONITORING STATION NOS. 4 AND 4A**  
**JUNE 21, 2012**  
**Ventura River Surface Water/Groundwater Interaction Study**  
City of San Buenaventura  
Foster Park, California

PLATE A26





**STREAMFLOW MONITORING STATION NO. 1**  
**JUNE 28, 2012**  
**Ventura River Surface Water/Groundwater Interaction Study**  
City of San Buenaventura  
Foster Park, California





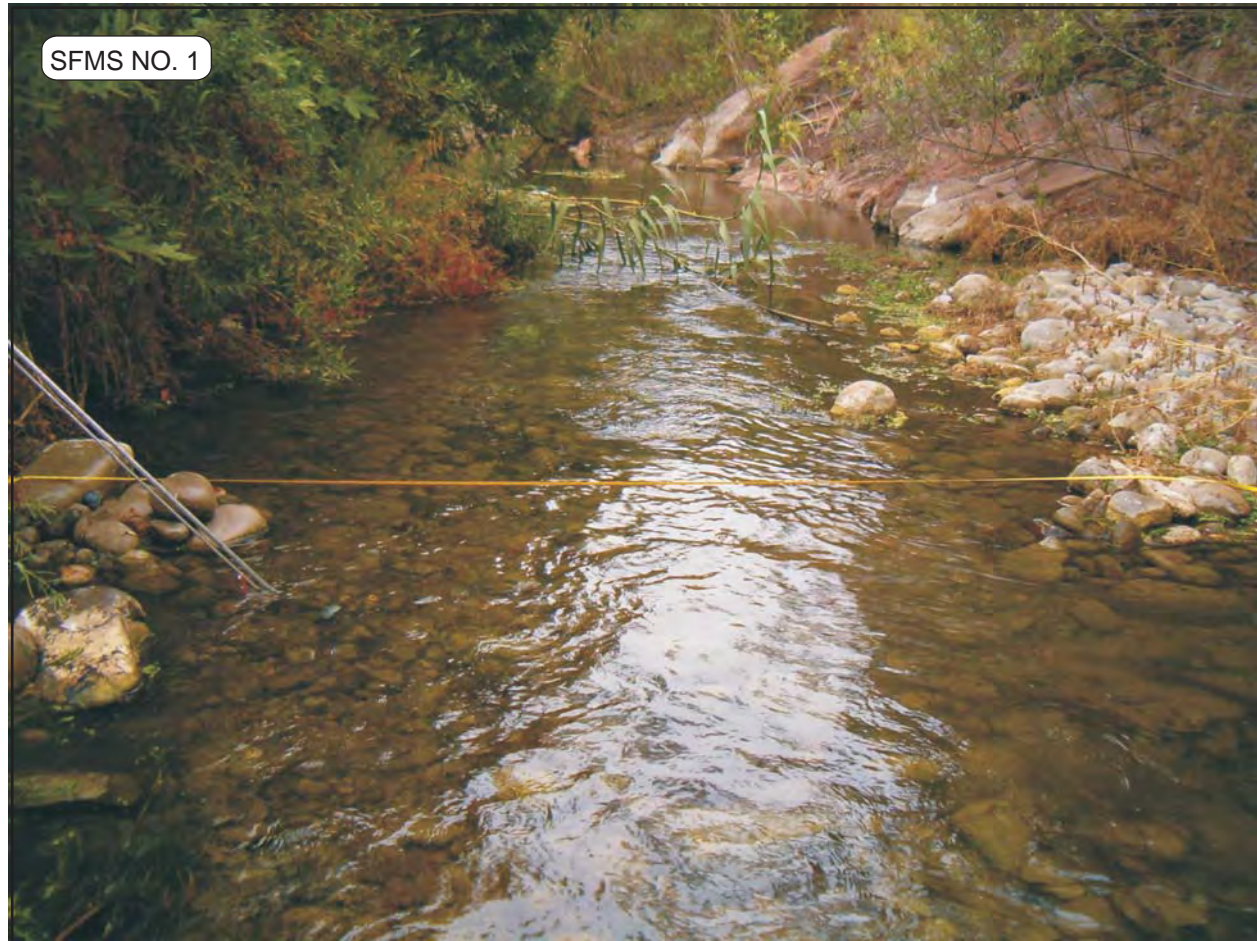
**STREAMFLOW MONITORING STATION NOS. 2 AND 3**  
**JUNE 28, 2012**  
**Ventura River Surface Water/Groundwater Interaction Study**  
City of San Buenaventura  
Foster Park, California





**STREAMFLOW MONITORING STATION NOS. 4 AND 4A**  
**JUNE 28, 2012**  
**Ventura River Surface Water/Groundwater Interaction Study**  
City of San Buenaventura  
Foster Park, California





**STREAMFLOW MONITORING STATION NO. 1**  
**JULY 5, 2012**  
**Ventura River Surface Water/Groundwater Interaction Study**  
City of San Buenaventura  
Foster Park, California





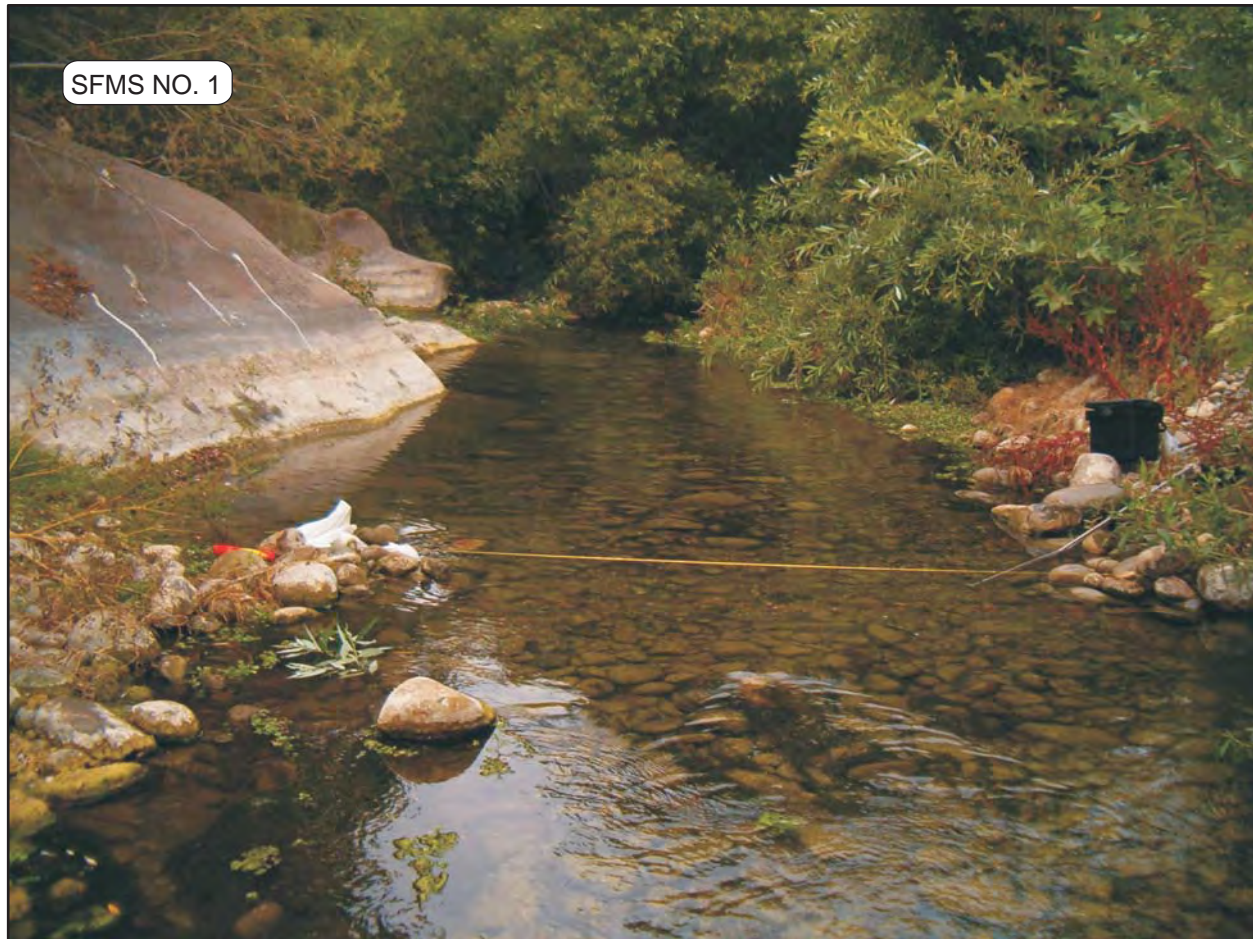
**STREAMFLOW MONITORING STATION NOS. 2 AND 3**  
**JULY 5, 2012**  
**Ventura River Surface Water/Groundwater Interaction Study**  
City of San Buenaventura  
Foster Park, California





**STREAMFLOW MONITORING STATION NOS. 4 AND 4A**  
**JULY 5, 2012**  
**Ventura River Surface Water/Groundwater Interaction Study**  
City of San Buenaventura  
Foster Park, California





**STREAMFLOW MONITORING STATION NO. 1**  
**JULY 12, 2012**  
**Ventura River Surface Water/Groundwater Interaction Study**  
City of San Buenaventura  
Foster Park, California





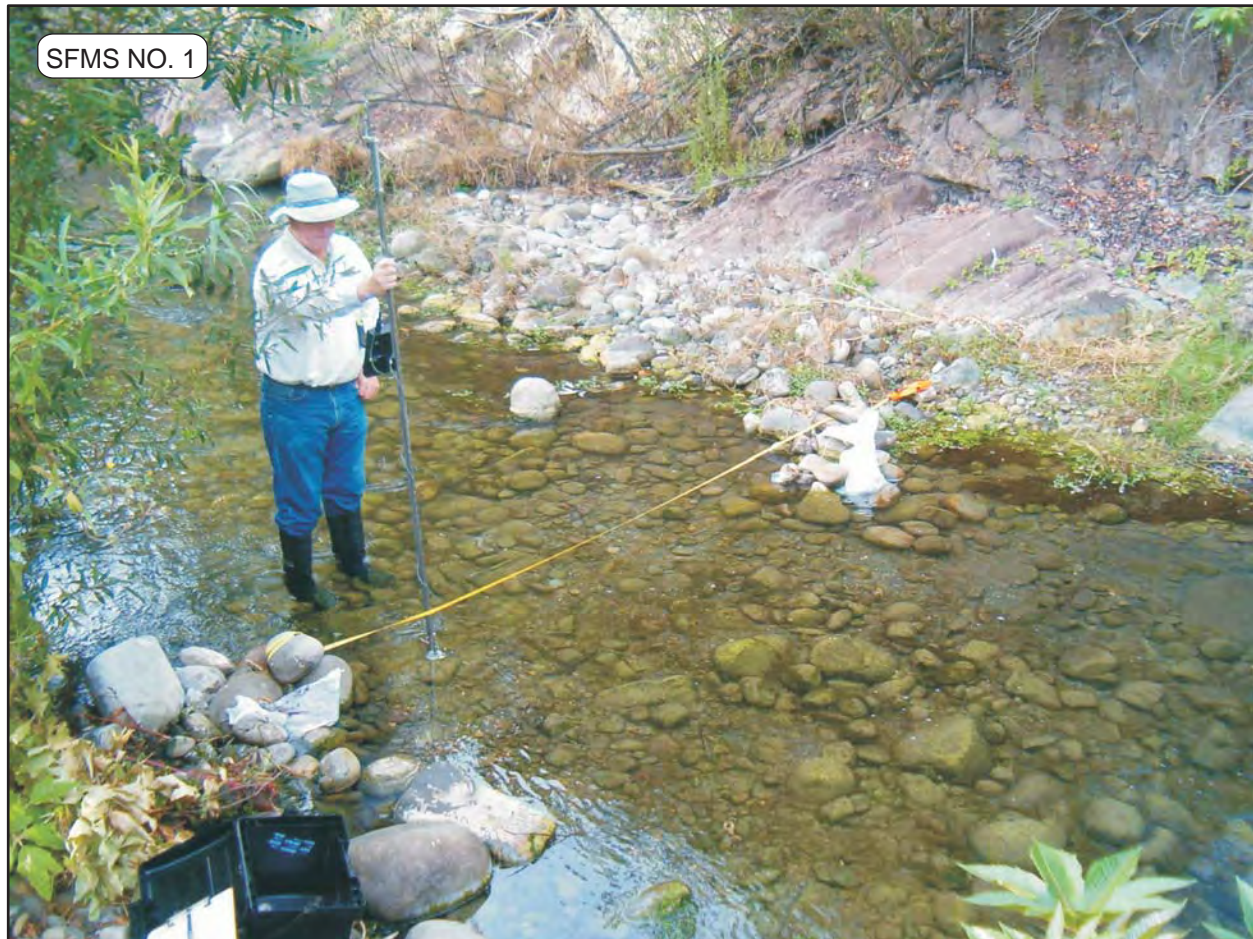
**STREAMFLOW MONITORING STATION NOS. 2 AND 3**  
**JULY 12, 2012**  
**Ventura River Surface Water/Groundwater Interaction Study**  
City of San Buenaventura  
Foster Park, California





**STREAMFLOW MONITORING STATION NOS. 4 AND 4A**  
**JULY 12, 2012**  
**Ventura River Surface Water/Groundwater Interaction Study**  
City of San Buenaventura  
Foster Park, California





**STREAMFLOW MONITORING STATION NO. 1**  
**JULY 19, 2012**  
**Ventura River Surface Water/Groundwater Interaction Study**  
City of San Buenaventura  
Foster Park, California





**STREAMFLOW MONITORING STATION NOS. 2 AND 3**  
**JULY 19, 2012**  
**Ventura River Surface Water/Groundwater Interaction Study**  
City of San Buenaventura  
Foster Park, California





**STREAMFLOW MONITORING STATION NOS. 4 AND 4A**  
**JULY 19, 2012**  
**Ventura River Surface Water/Groundwater Interaction Study**  
City of San Buenaventura  
Foster Park, California





**STREAMFLOW MONITORING STATION NO. 1**  
**JULY 26, 2012**  
**Ventura River Surface Water/Groundwater Interaction Study**  
City of San Buenaventura  
Foster Park, California





**STREAMFLOW MONITORING STATION NO. 2**  
**JULY 26, 2012**  
**Ventura River Surface Water/Groundwater Interaction Study**  
City of San Buenaventura  
Foster Park, California





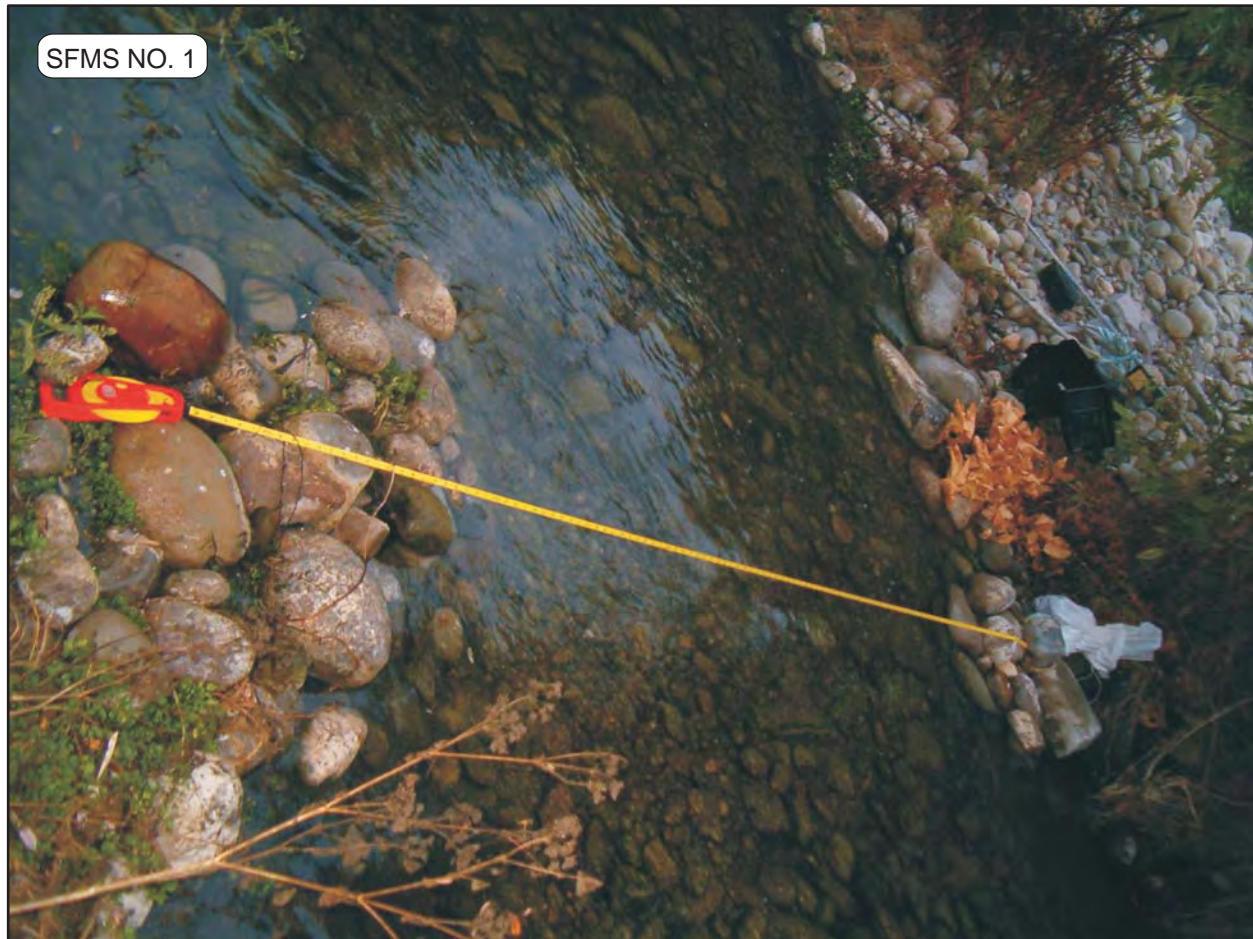
**STREAMFLOW MONITORING STATION NOS. 3 AND 4**  
**JULY 26, 2012**  
**Ventura River Surface Water/Groundwater Interaction Study**  
City of San Buenaventura  
Foster Park, California





**STREAMFLOW MONITORING STATION NO. 4A**  
**JULY 26, 2012**  
**Ventura River Surface Water/Groundwater Interaction Study**  
City of San Buenaventura  
Foster Park, California





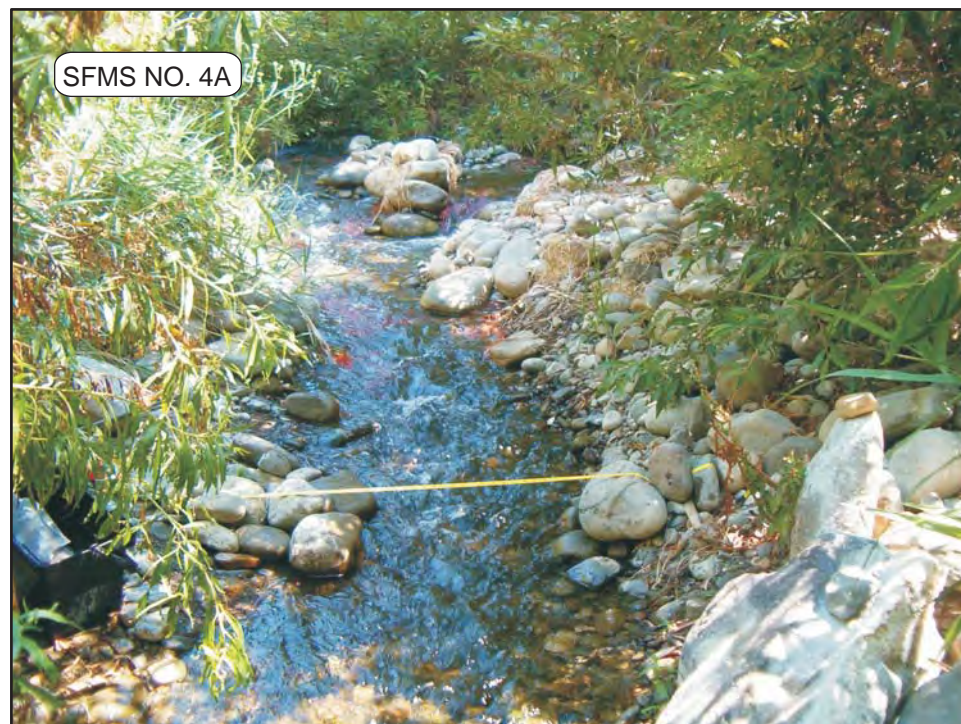
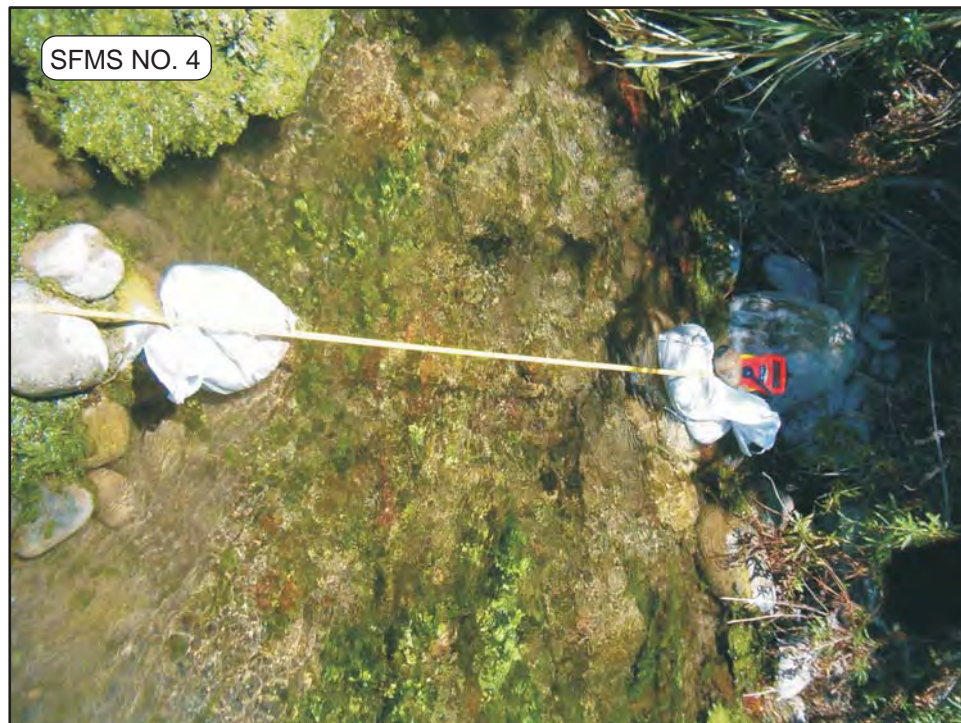
**STREAMFLOW MONITORING STATION NO. 1**  
**AUGUST 2, 2012**  
**Ventura River Surface Water/Groundwater Interaction Study**  
City of San Buenaventura  
Foster Park, California





**STREAMFLOW MONITORING STATION NOS. 2 AND 3**  
**AUGUST 2, 2012**  
**Ventura River Surface Water/Groundwater Interaction Study**  
City of San Buenaventura  
Foster Park, California





**STREAMFLOW MONITORING STATION NOS. 4 AND 4A**  
**AUGUST 2, 2012**  
**Ventura River Surface Water/Groundwater Interaction Study**  
City of San Buenaventura  
Foster Park, California



**STREAMFLOW MONITORING STATION NO. 1**  
**AUGUST 8, 2012**  
**Ventura River Surface Water/Groundwater Interaction Study**  
City of San Buenaventura  
Foster Park, California





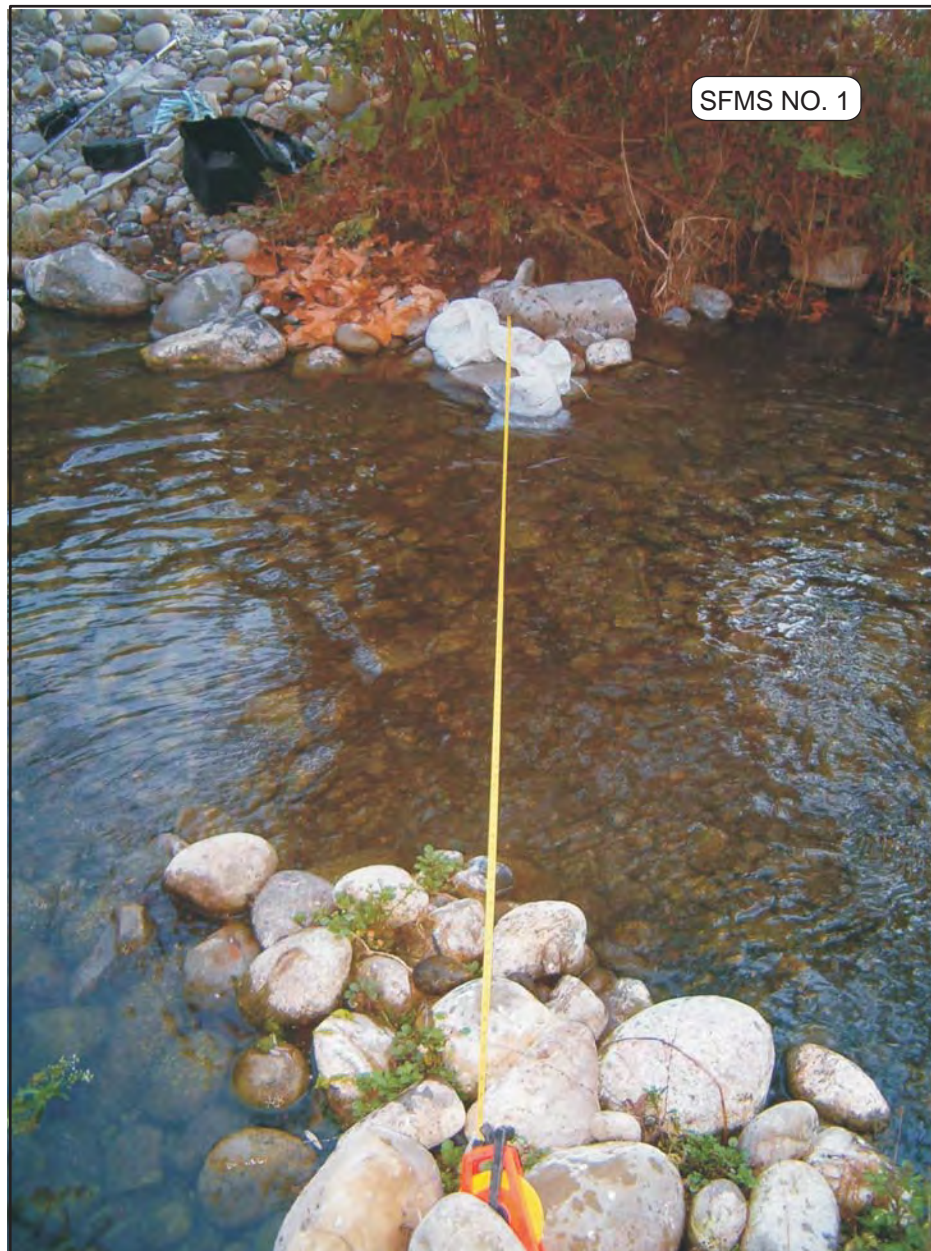
**STREAMFLOW MONITORING STATION NOS. 2 AND 3**  
**AUGUST 8, 2012**  
**Ventura River Surface Water/Groundwater Interaction Study**  
City of San Buenaventura  
Foster Park, California





**STREAMFLOW MONITORING STATION NOS. 4 AND 4A**  
**AUGUST 8, 2012**  
**Ventura River Surface Water/Groundwater Interaction Study**  
City of San Buenaventura  
Foster Park, California





**STREAMFLOW MONITORING STATION NO. 1**  
**AUGUST 13, 2012**  
**Ventura River Surface Water/Groundwater Interaction Study**  
City of San Buenaventura  
Foster Park, California



**STREAMFLOW MONITORING STATION NOS. 2 AND 3**  
**AUGUST 13, 2012**  
**Ventura River Surface Water/Groundwater Interaction Study**  
City of San Buenaventura  
Foster Park, California





**STREAMFLOW MONITORING STATION NOS. 4 AND 4A**  
**AUGUST 13, 2012**  
**Ventura River Surface Water/Groundwater Interaction Study**  
City of San Buenaventura  
Foster Park, California



**STREAMFLOW MONITORING STATION NO. 1**  
**AUGUST 16, 2012**  
**Ventura River Surface Water/Groundwater Interaction Study**  
City of San Buenaventura  
Foster Park, California





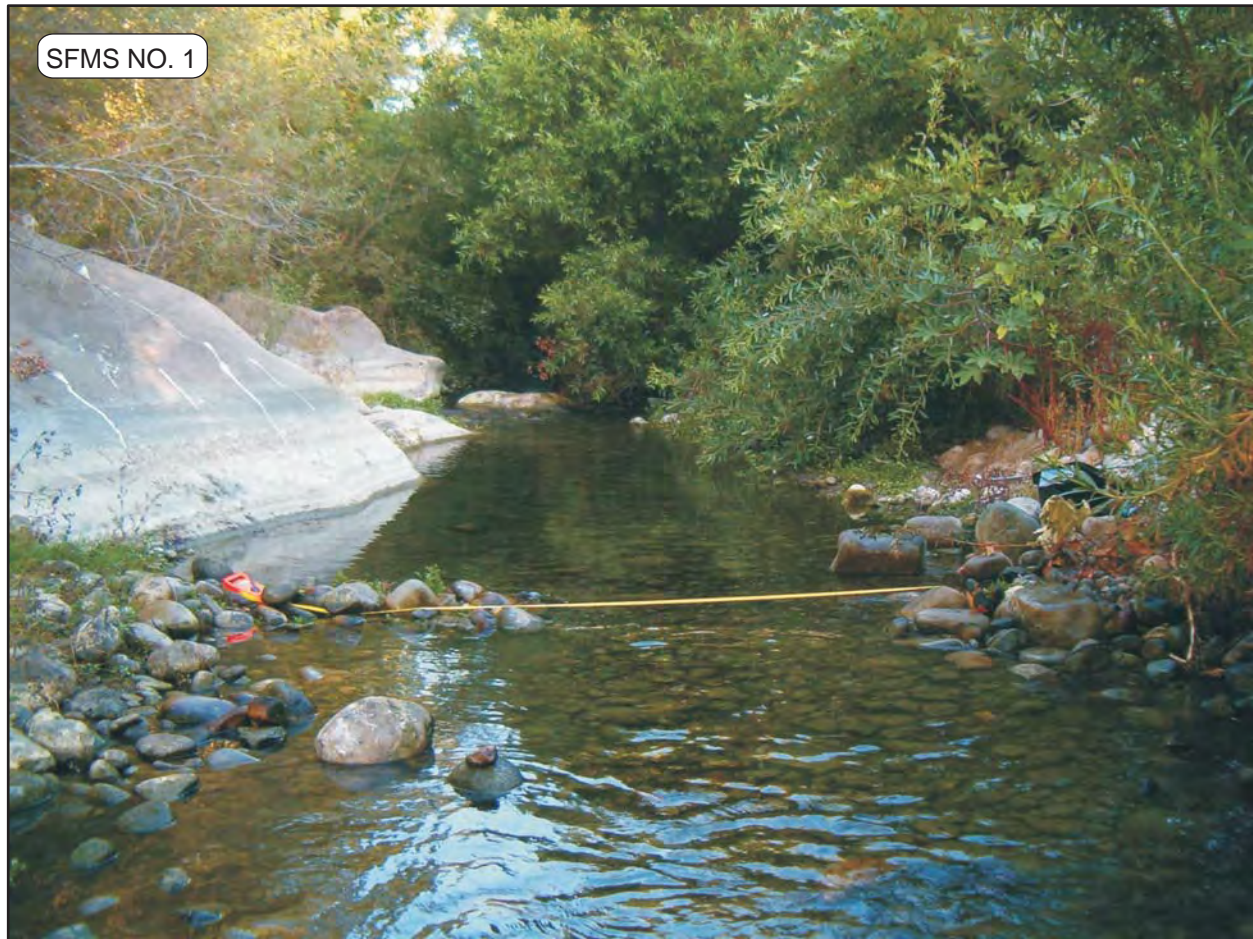
**STREAMFLOW MONITORING STATION NOS. 2 AND 3**  
**AUGUST 16, 2012**  
**Ventura River Surface Water/Groundwater Interaction Study**  
City of San Buenaventura  
Foster Park, California





**STREAMFLOW MONITORING STATION NOS. 4 AND 4A**  
**AUGUST 16, 2012**  
**Ventura River Surface Water/Groundwater Interaction Study**  
City of San Buenaventura  
Foster Park, California





**STREAMFLOW MONITORING STATION NO. 1**  
**AUGUST 20, 2012**  
**Ventura River Surface Water/Groundwater Interaction Study**  
City of San Buenaventura  
Foster Park, California

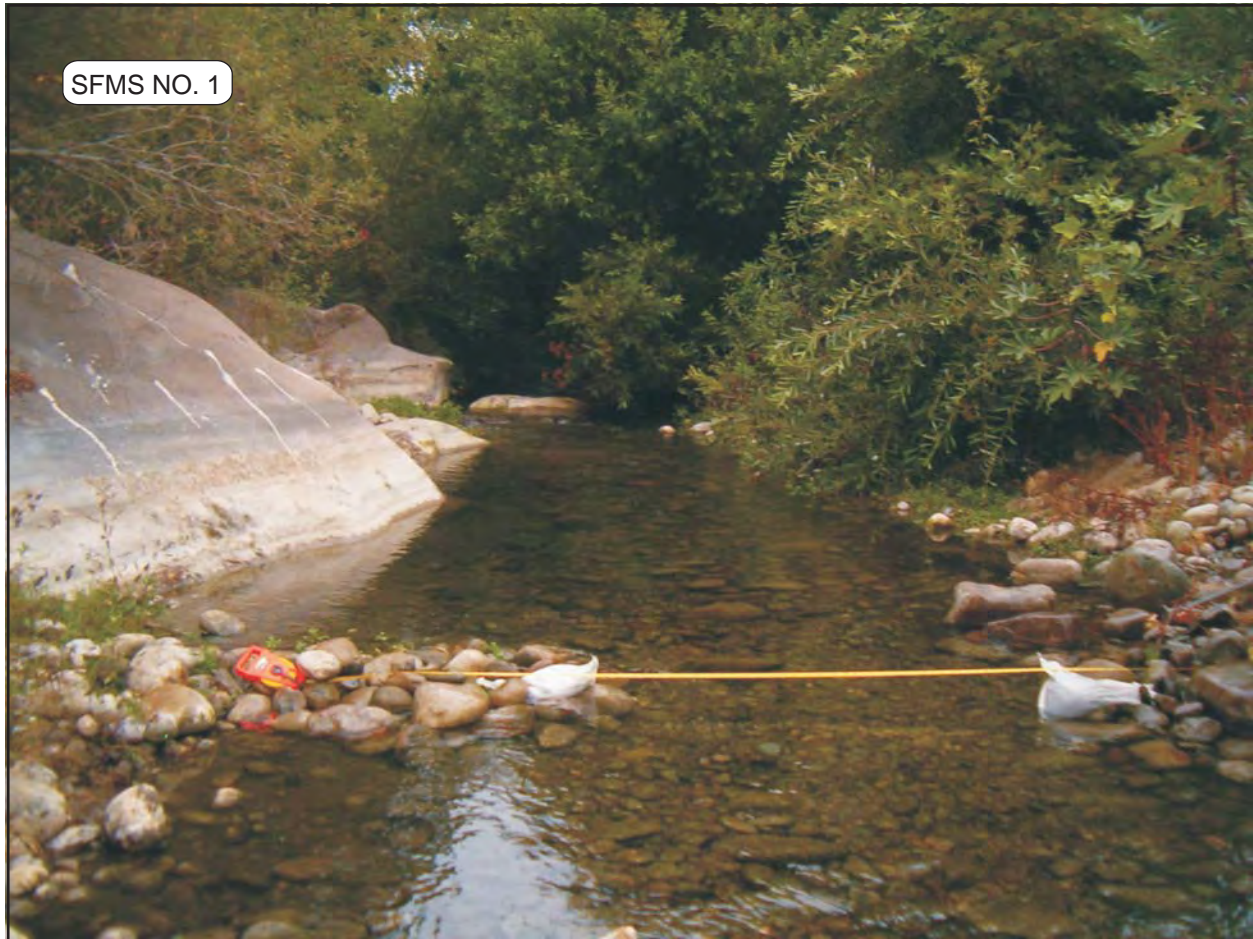


**STREAMFLOW MONITORING STATION NOS. 2 AND 3**  
**AUGUST 20, 2012**  
**Ventura River Surface Water/Groundwater Interaction Study**  
City of San Buenaventura  
Foster Park, California





**STREAMFLOW MONITORING STATION NOS. 4 AND 4A**  
**AUGUST 20, 2012**  
**Ventura River Surface Water/Groundwater Interaction Study**  
City of San Buenaventura  
Foster Park, California



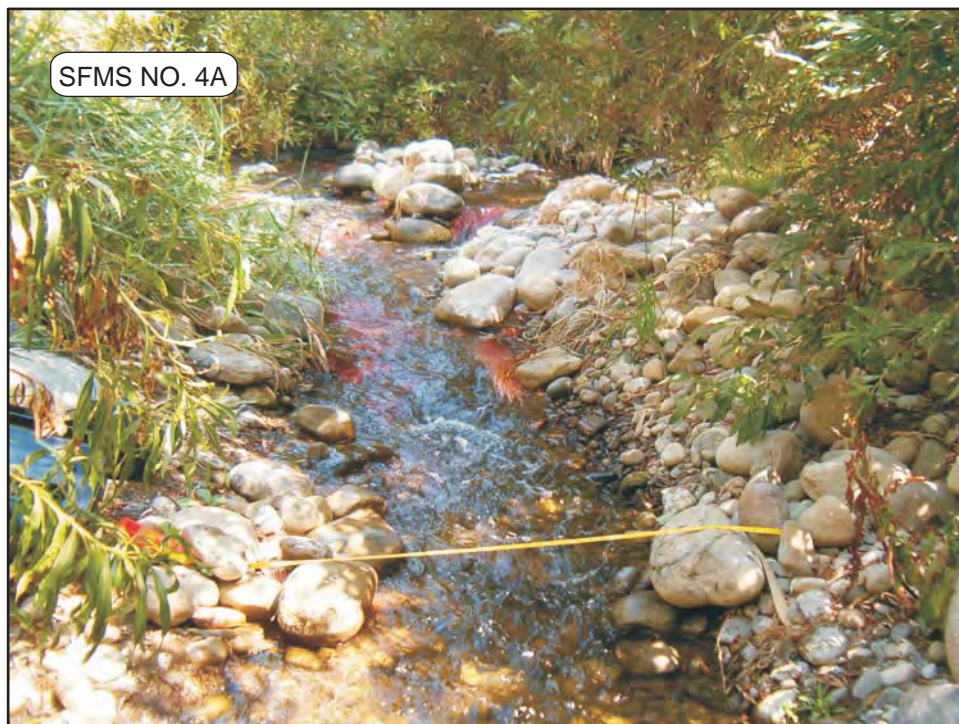
**STREAMFLOW MONITORING STATION NO. 1**  
**AUGUST 23, 2012**  
**Ventura River Surface Water/Groundwater Interaction Study**  
City of San Buenaventura  
Foster Park, California





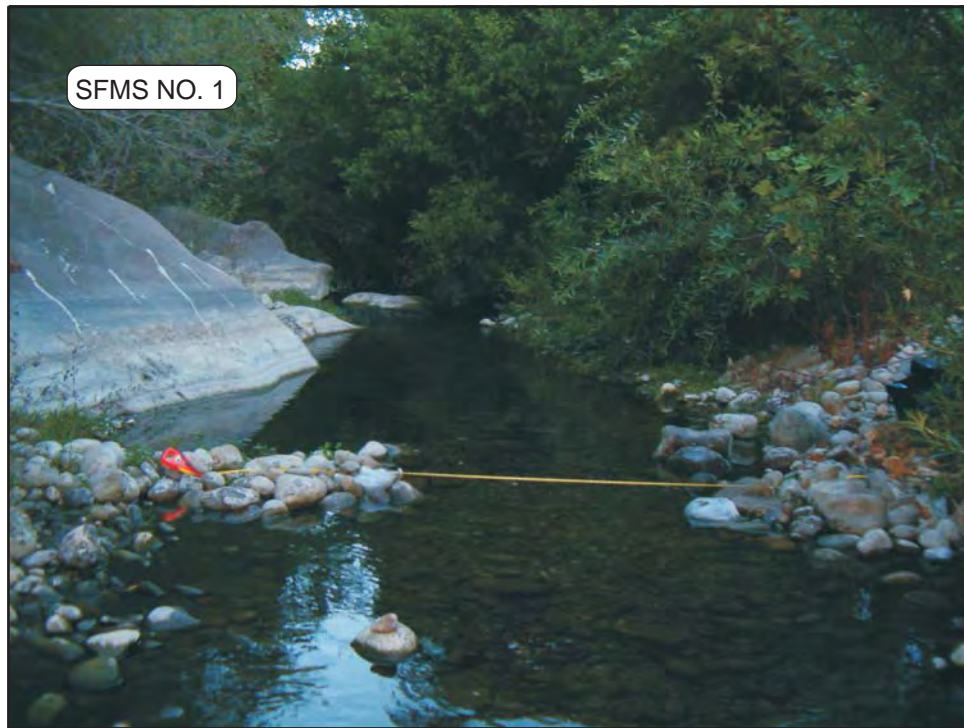
**STREAMFLOW MONITORING STATION NOS. 2 AND 3**  
**AUGUST 23, 2012**  
**Ventura River Surface Water/Groundwater Interaction Study**  
City of San Buenaventura  
Foster Park, California



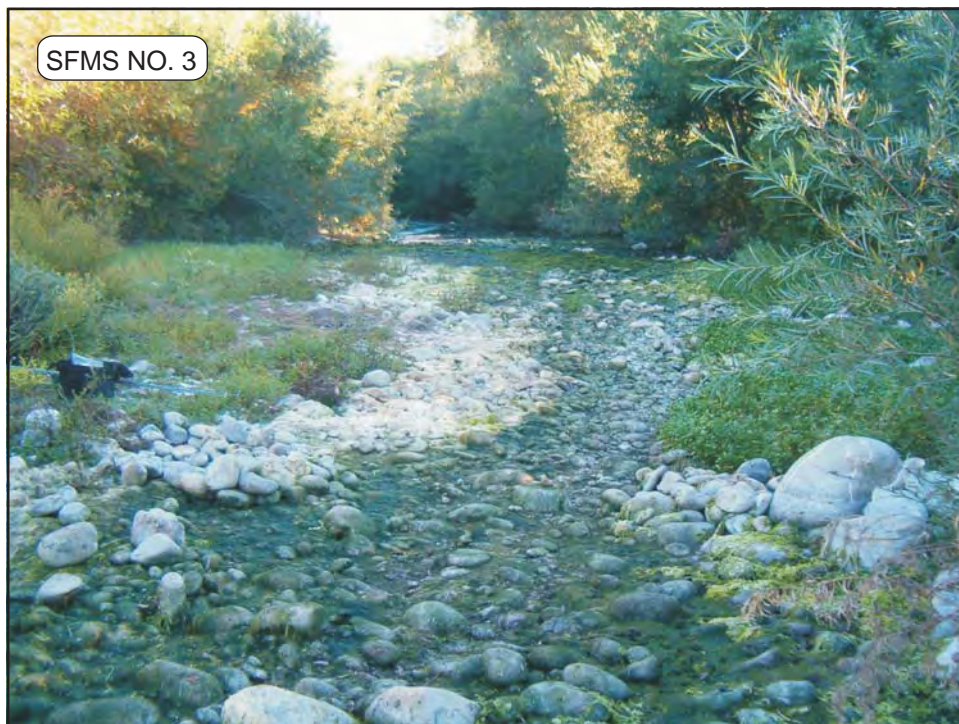


**STREAMFLOW MONITORING STATION NOS. 4 AND 4A**  
**AUGUST 23, 2012**  
**Ventura River Surface Water/Groundwater Interaction Study**  
City of San Buenaventura  
Foster Park, California



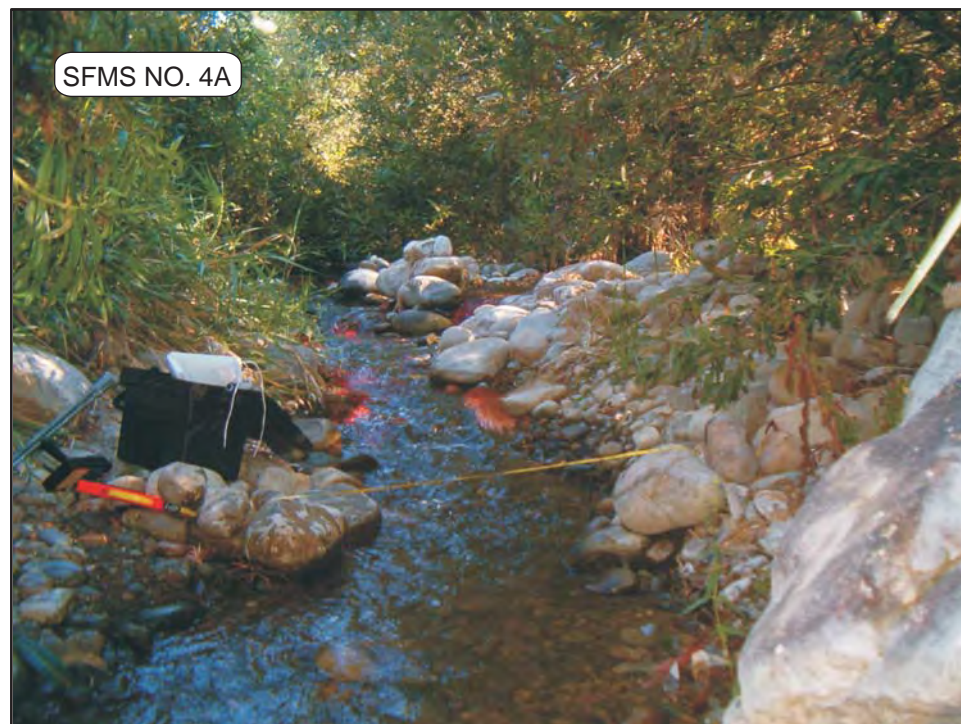


**STREAMFLOW MONITORING STATION NO. 1**  
**AUGUST 28, 2012**  
**Ventura River Surface Water/Groundwater Interaction Study**  
City of San Buenaventura  
Foster Park, California



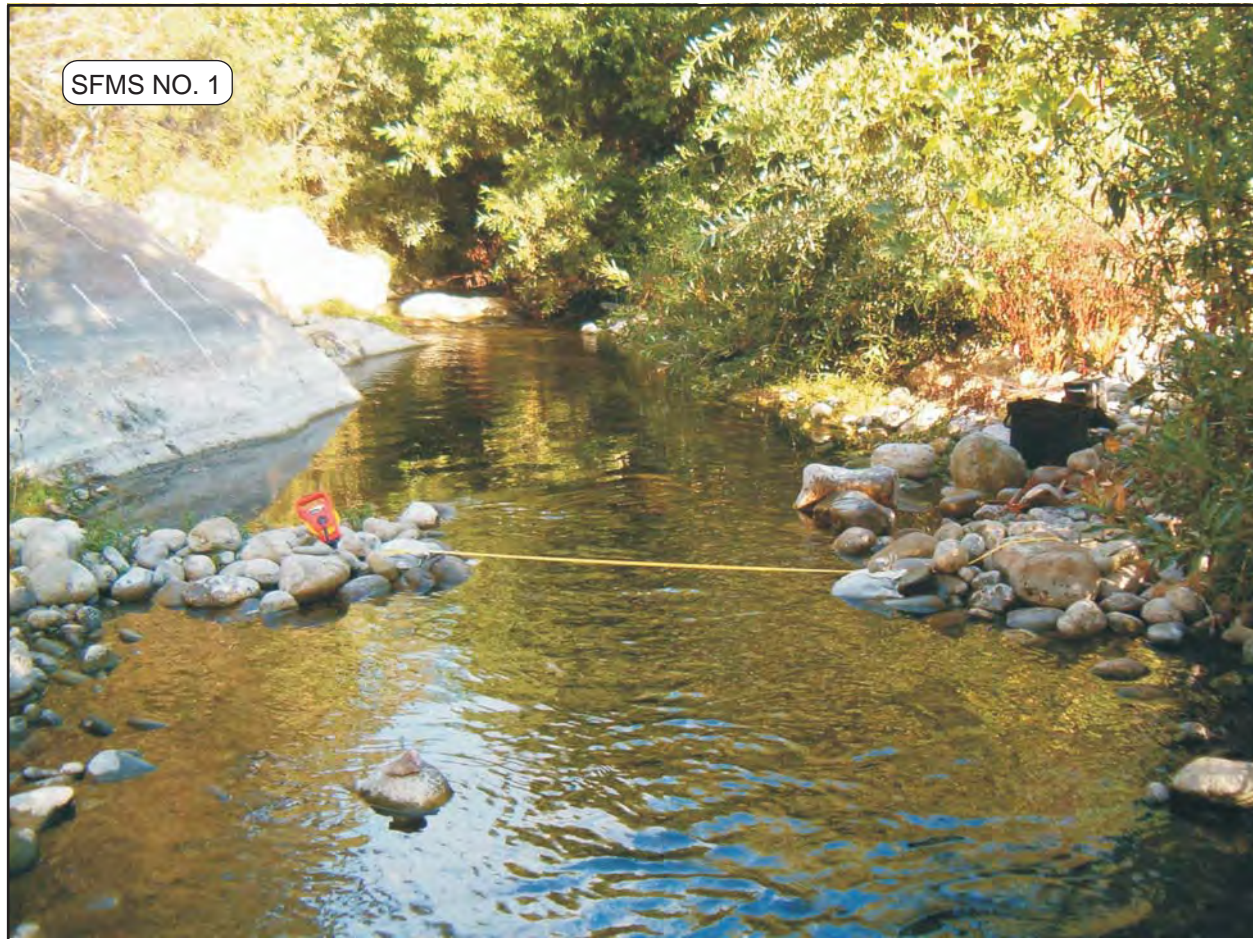
**STREAMFLOW MONITORING STATION NOS. 2 AND 3**  
**AUGUST 28, 2012**  
**Ventura River Surface Water/Groundwater Interaction Study**  
City of San Buenaventura  
Foster Park, California





**STREAMFLOW MONITORING STATION NOS. 4 AND 4A**  
**AUGUST 28, 2012**  
**Ventura River Surface Water/Groundwater Interaction Study**  
City of San Buenaventura  
Foster Park, California





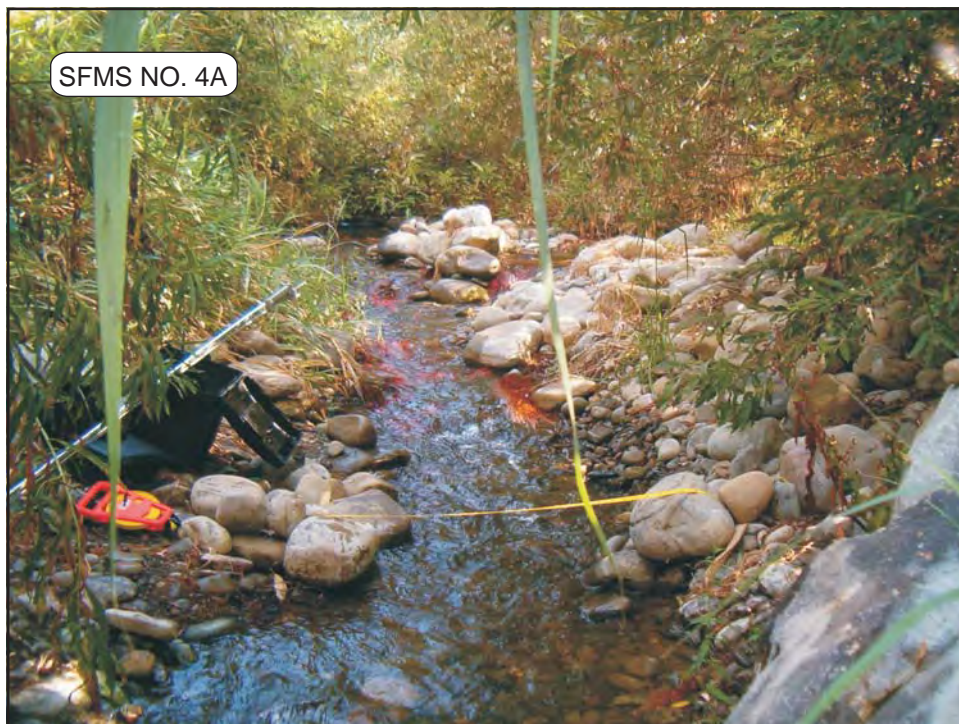
**STREAMFLOW MONITORING STATION NO. 1**  
**AUGUST 31, 2012**  
**Ventura River Surface Water/Groundwater Interaction Study**  
City of San Buenaventura  
Foster Park, California





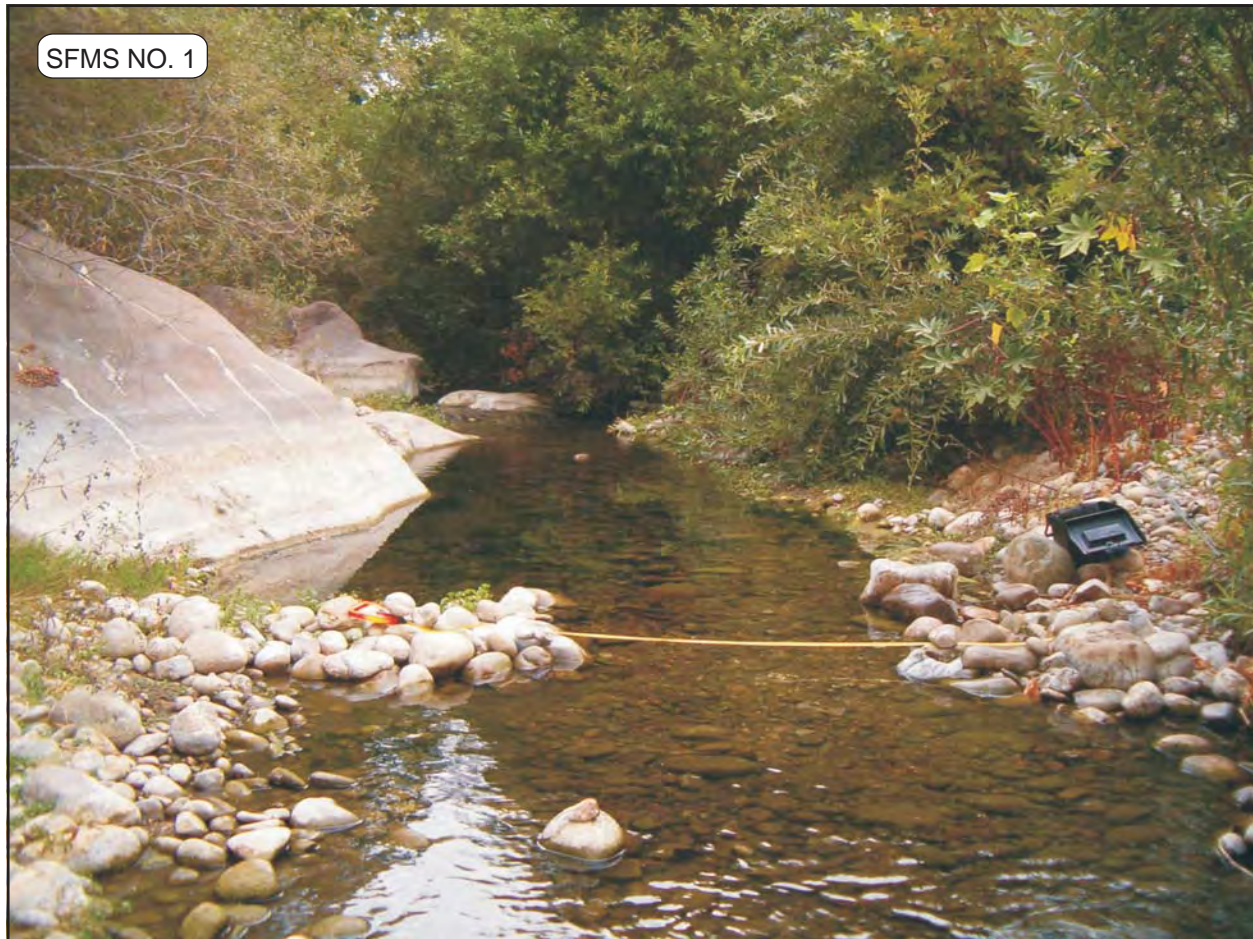
**STREAMFLOW MONITORING STATION NOS. 2 AND 3**  
**AUGUST 31, 2012**  
**Ventura River Surface Water/Groundwater Interaction Study**  
City of San Buenaventura  
Foster Park, California





**STREAMFLOW MONITORING STATION NOS. 4 AND 4A**  
**AUGUST 31, 2012**  
**Ventura River Surface Water/Groundwater Interaction Study**  
City of San Buenaventura  
Foster Park, California



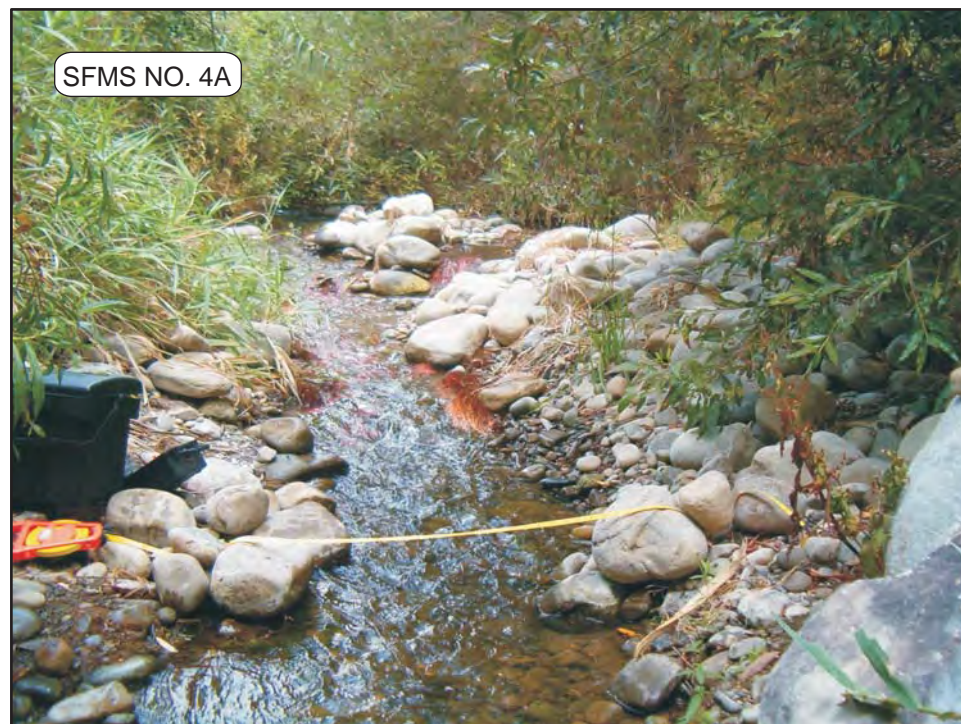


**STREAMFLOW MONITORING STATION NO. 1**  
**September 5, 2012**  
**Ventura River Surface Water/Groundwater Interaction Study**  
City of San Buenaventura  
Foster Park, California



**STREAMFLOW MONITORING STATION NOS. 2 AND 3**  
**SEPTEMBER 5, 2012**  
**Ventura River Surface Water/Groundwater Interaction Study**  
City of San Buenaventura  
Foster Park, California





**STREAMFLOW MONITORING STATION NOS. 4 AND 4A**  
**SEPTEMBER 5, 2012**  
**Ventura River Surface Water/Groundwater Interaction Study**  
City of San Buenaventura  
Foster Park, California



**STREAMFLOW MONITORING STATION NO. 1**  
**SEPTEMBER 12, 2012**  
**Ventura River Surface Water/Groundwater Interaction Study**  
City of San Buenaventura  
Foster Park, California





**STREAMFLOW MONITORING STATION NOS. 2 AND 3**  
**SEPTEMBER 12, 2012**  
**Ventura River Surface Water/Groundwater Interaction Study**  
City of San Buenaventura  
Foster Park, California





**STREAMFLOW MONITORING STATION NOS. 4 AND 4A**  
**SEPTEMBER 12, 2012**  
**Ventura River Surface Water/Groundwater Interaction Study**  
City of San Buenaventura  
Foster Park, California





**STREAMFLOW MONITORING STATION NO. 1**  
**September 19, 2012**  
**Ventura River Surface Water/Groundwater Interaction Study**  
City of San Buenaventura  
Foster Park, California



**STREAMFLOW MONITORING STATION NOS. 2 AND 3**  
**SEPTEMBER 19, 2012**  
**Ventura River Surface Water/Groundwater Interaction Study**  
City of San Buenaventura  
Foster Park, California





**STREAMFLOW MONITORING STATION NOS. 4 AND 4A**  
**SEPTEMBER 19, 2012**  
**Ventura River Surface Water/Groundwater Interaction Study**  
City of San Buenaventura  
Foster Park, California