

RECEIVED

NOV 06 2015



OJAI BASIN
GROUNDWATER MANAGEMENT AGENCY
A STATE OF CALIFORNIA WATER AGENCY

VENTURA RIVER
WATER DISTRICT

MEMBER AGENCIES

Ojai Water Conservation District
Casitas Municipal Water District
City of Ojai
Golden State Water Company

OJAI BASIN MUTUAL WATER COMPANIES

Senior Canyon MWC
Siete Robles MWC
Hermitage MWC

November 2, 2015

Upper Ventura River GSA
Attention: Bert Rapp
409 Old Baldwin Road
Ojai, CA 93023

Dear Mr. Rapp:

The Ojai Basin Groundwater Management Agency (OBGMA) was one of a handful of groundwater management agencies in the State of California that was called out in legislation as agencies that could apply to the Department of Water Resources (DWR) for official recognition as Groundwater Sustainability Agencies (GSAs) in the benchmark legislation called the Sustainable Groundwater Management Act of 2014 (SGMA).

OBGMA has adopted the resolution necessary to become the GSA for the Ojai Basin and DWR has accepted that action.

Currently, OBGMA is working on the preparation of the required Sustainable Groundwater Management Plan. This plan, much like the General Plans of Counties and Cities, will govern the required actions needed to meet Management Objectives that will sustain groundwater extraction for beneficial uses in the basin into the future.

During this intense emersion into all aspects of the basin and the application of powers located in our initializing legislation adopted in 1991, coupled with new powers and duties located in SGMA, OBGMA realized that the maps currently in use, and the maps of the basin and accompanying jurisdiction that have been used by the State since 1985, have a need to be corrected.

This correction is needed to clarify the location of all of the alluvial areas that are part of the Ojai Basin groundwater storage; the boundary limits defined by geologic structures such as the Santa Ana Fault on our southern border; eliminating areas that are not a part of the basin based on recognized science today; and specific areas to the west that were not addressed in Bulletin 118 for areas that drain into the basin and providing groundwater for storage and use by all of the tenants in common.

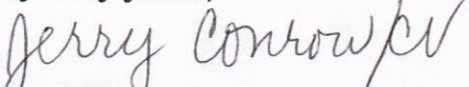
Reaching out to legal jurisdictions that overlay the basin for support is part of the procedure developed by DWR in new regulations developed for the process of changing Bulletin 118, which maps all groundwater basins in the State.

Our petition to be sent to DWR will be scientifically based rather than political boundaries or previous maps. OBGMA hydrogeologists have drafted the new maps based on sound geology and hydrogeologic information. OBGMA needs to correct the maps with this new information simply because the agency must have a complete basin over which it must manage the groundwater in a sustainable manner into the future.

Please find attached the collection of maps, in draft format, that have been used in the past, along with the new maps, with corresponding explanations. When the maps are finally approved the word "Draft" will be removed.

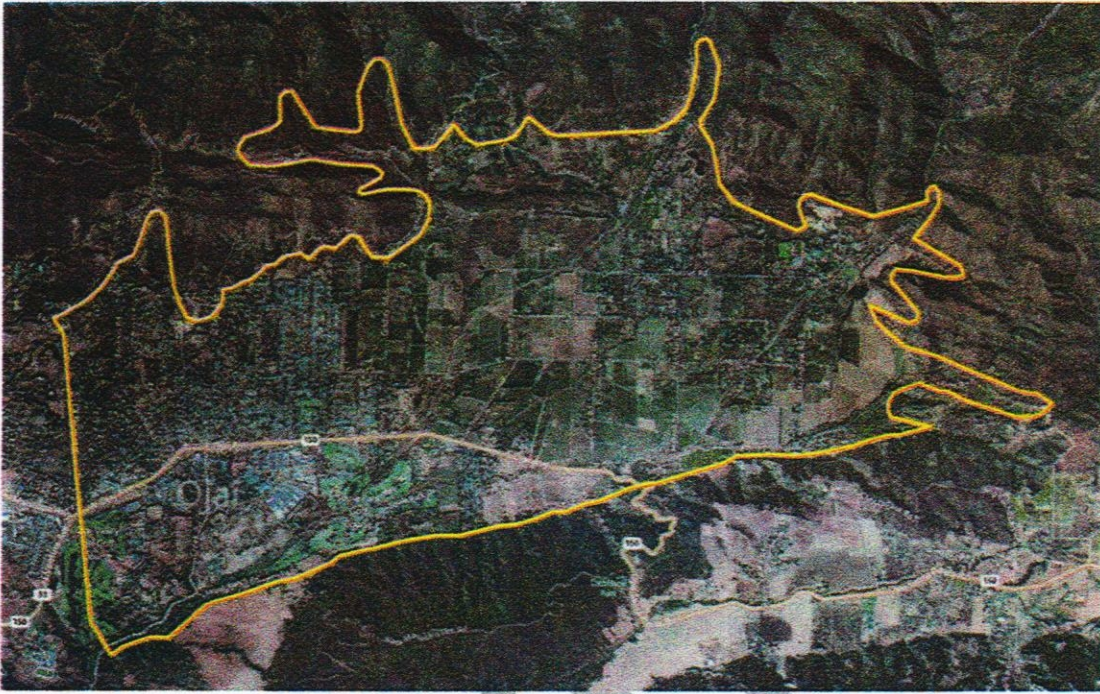
We sincerely hope you can support this action and provide OBGMA with a resolution of support which will be forwarded to DWR in our complete packet of information for the change in Bulletin 118. Please contact the OBGMA office at 805.640.1207 should you have any questions.

Very truly yours,

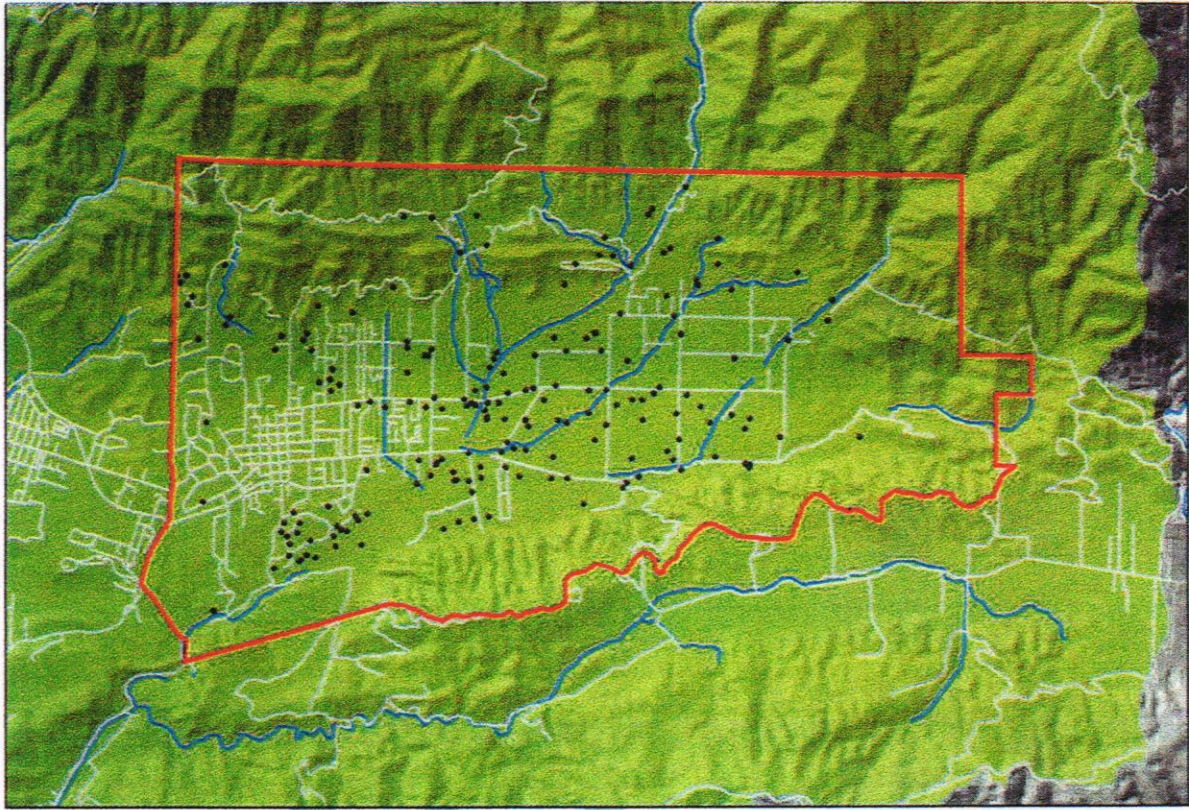

Jerry Conrow
President, OBGMA

Attachments: OBGMA Basin Map
 OBGMA Website Boundary Map
 DWR Bulletin 118 Map
 DWR Composite with All Maps
 OBGMA Draft Drainage Map (Kear)
 OBGMA Draft Alluvial Basin Map (Kear)

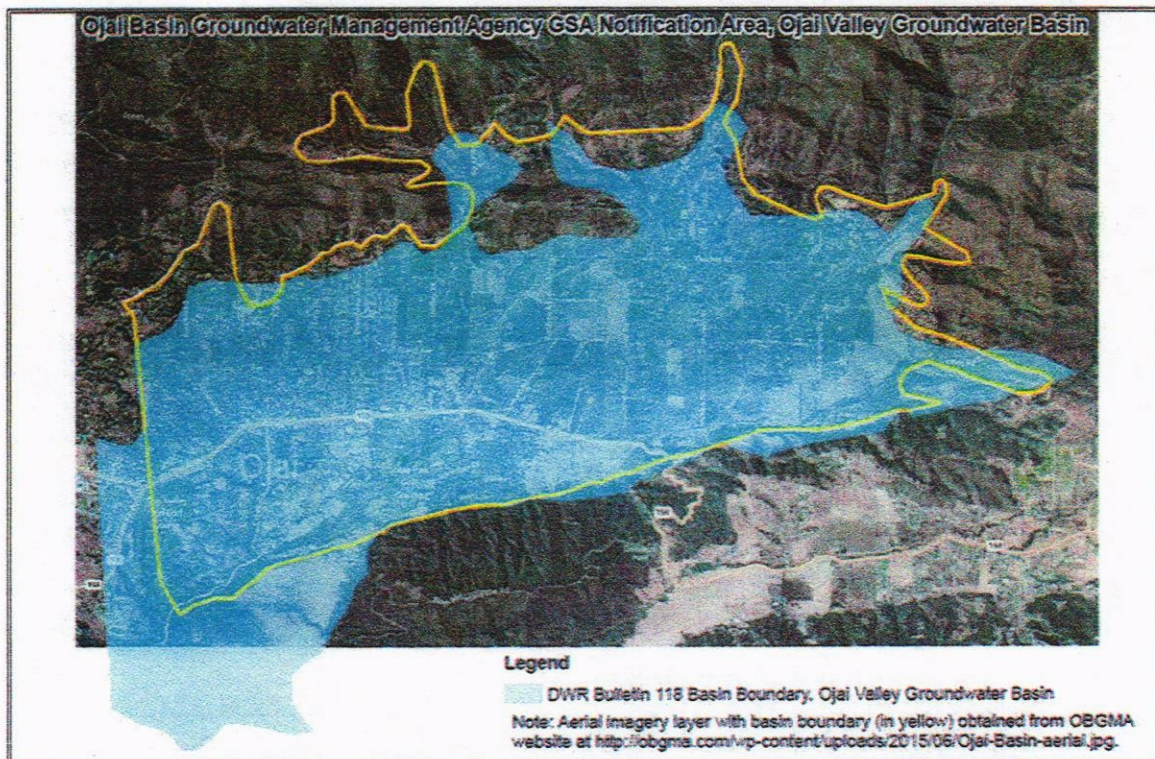
cc: Tully Clifford, Ventura County Watershed Protection District
Steve Bennett, Ventura County Supervisor
Steve Wickstrum, Casitas Municipal Water District
Bert Rapp, Ventura River Water District
Bert Rapp, Upper Ventura River GSA Formation Committee
Mike Hollebrands, Meiners Oaks Water District
Rob Clark, City of Ojai
Shana Epstein, City of Ventura
Mark Nordberg, DWR
Mark H. Capelli, NMFS
Mary Larson, CDFW
Chris Dellith, USFWS
Rick Rogers, NMFS SRO
Roger Essick, Hermitage Mutual Water Company
William Ulrich, Gridley Water Group
Peter Theilke, Senior Canyon Mutual Water Company
Dave Morgan, Siete Robles Mutual Water Company
Mark Zimmer, Golden State Water Company



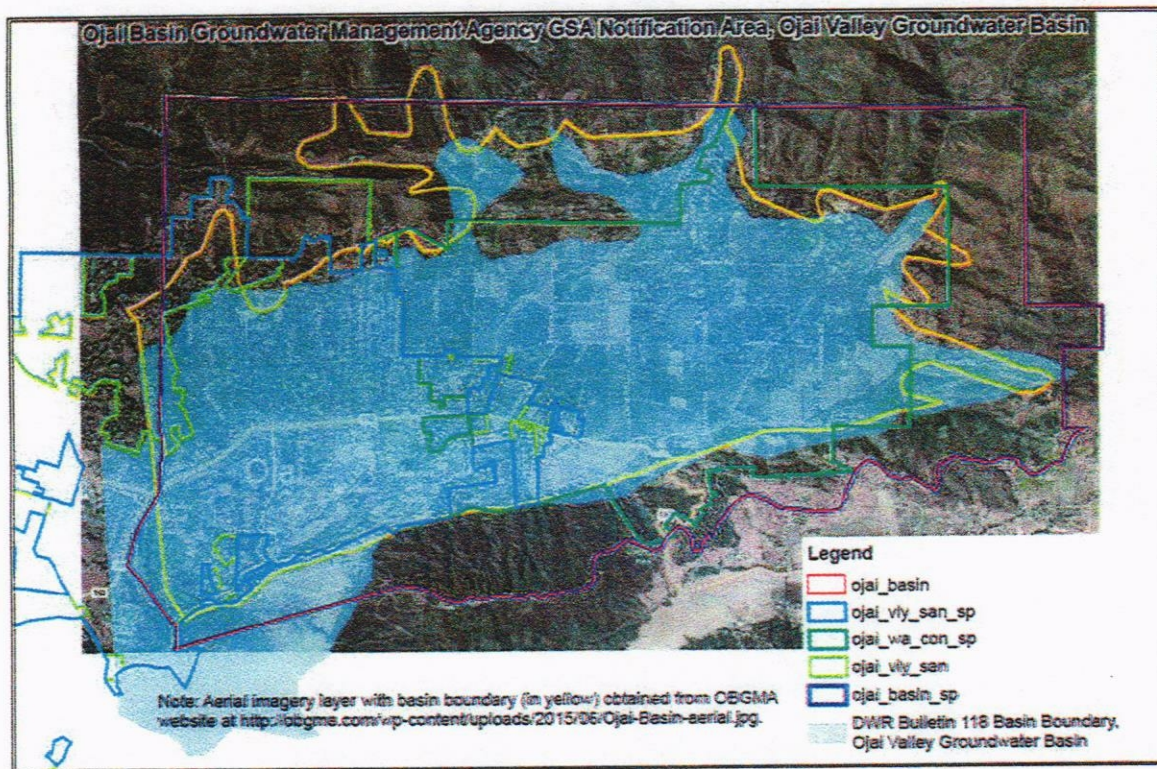
This areal depiction includes the outline of the Ojai Basin as currently recognized by the County of Ventura and utilized by many as the areal extent of the alluvial area for the Ojai Basin.



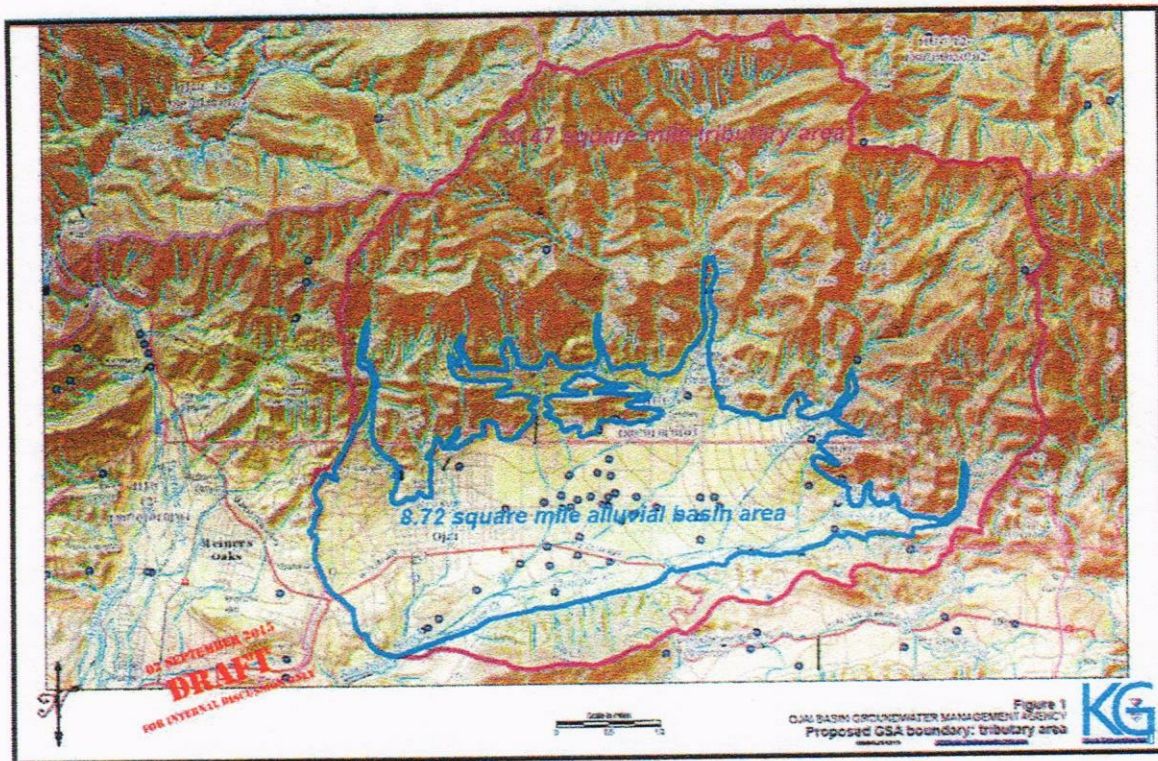
This map, developed by the Ventura County Watershed Protection District, is utilized on the OBGMA website and depicts the OBGMA Boundary.



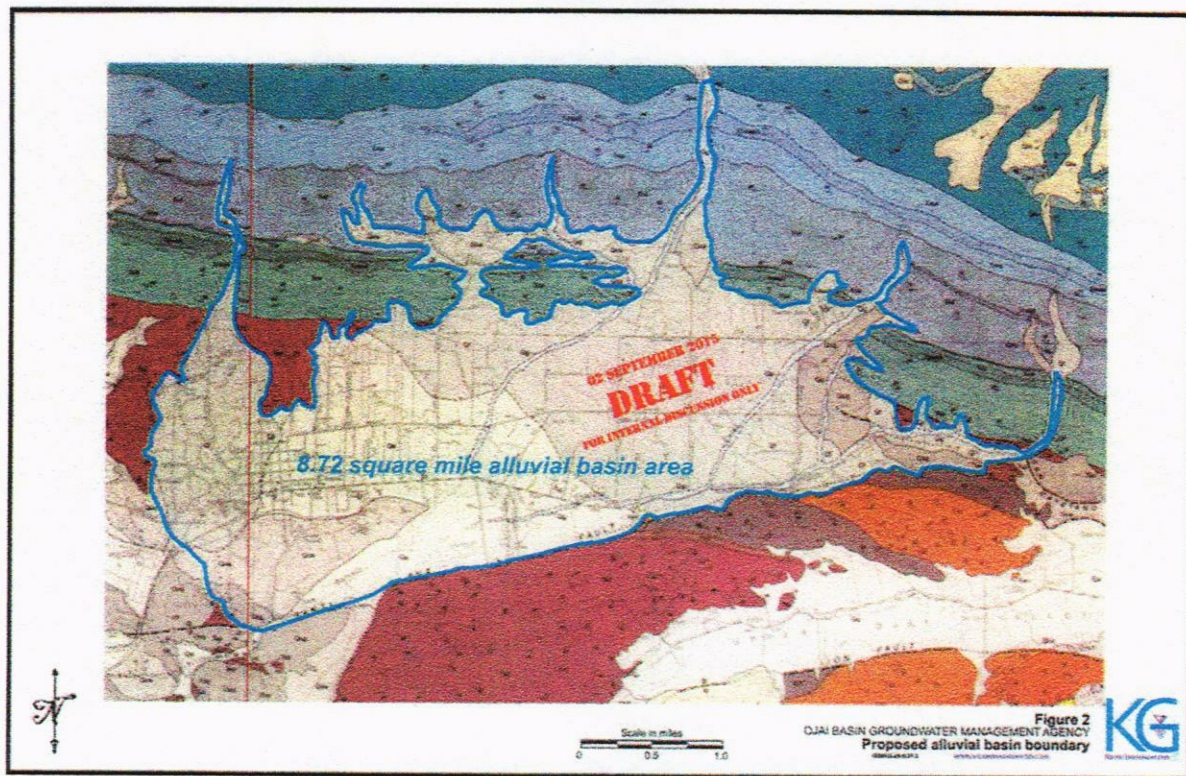
This map depicts the difference between the current DWR Bulletin 118 map (light blue shade) and the Ventura County Ojai Basin boundary map.



This map depicts a composite of many of the layers of currently utilized maps in existence. This map was developed by DWR to help OBGMA deal with the problem of correct basin and boundary issues.



This map depicts the tributary area for the Ojai Basin. All 30.47 square miles drain toward the basin and contribute to the recharge of the basin; some groundwater within bedrock areas also contribute to alluvial basin recharge and supply water to wells. The GSA Boundaries should include recharge areas shown hereon.



The alluvial basin area depicts 8.72 square miles of water bearing area that should be managed by the OBGMA.