

# Upper Ventura River Basin Boundaries: Evolving and Dissecting

2<sup>ND</sup> STAKEHOLDER FORUM

UPPER VENTURA RIVER BASIN (UVRB)

GROUNDWATER SUSTAINABILITY AGENCY (GSA)

FORMATION COMMITTEE

Thursday, January 28, 2015

Jordan Kear, PG, CHG  
Kear Groundwater



# Basin Boundary Modification

- Focus today is on technical information
  - *Geologic*
  - *Hydrologic*
  - *Structure and infrastructure*
- Public participation, notification, web updates, DWR interface, County interface, stakeholders interface, reporting, etc. are ongoing
- Subject to revision and further discussion

# Bulletin 118 Defines a Groundwater Basin

*A Groundwater Basin is defined as an alluvial aquifer or stacked series of alluvial aquifers with reasonably well-defined boundaries in a lateral direction and a definable bottom.*

*Lateral boundaries are features that significantly impede groundwater flow such as rock or sediments with very low permeability or a geologic structure such as a fault.*

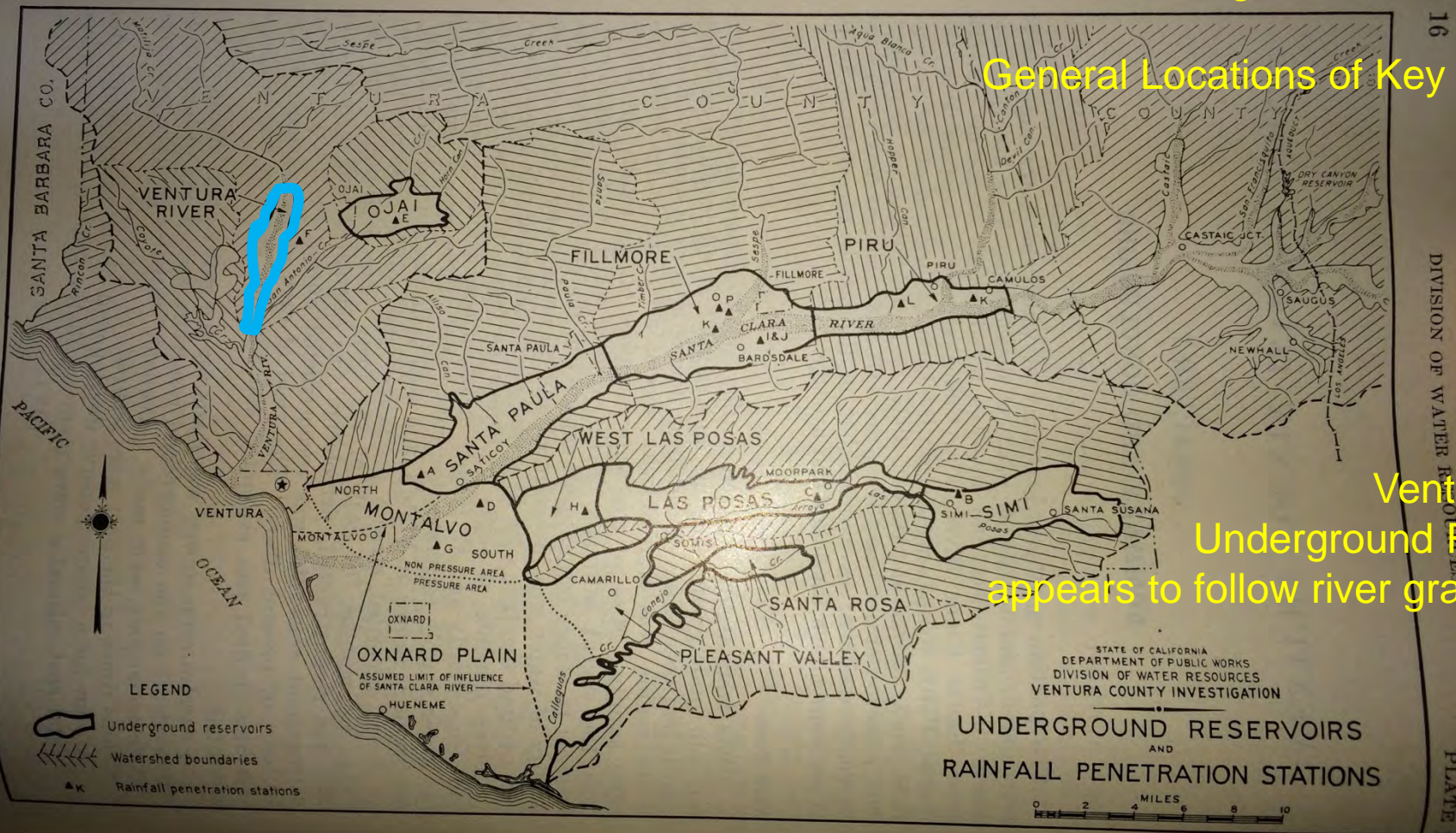
*Bottom boundaries would include rock or sediments of very low permeability if no alluvial aquifers occur below those sediments within the basin.*



DWR, 1933

## "Underground Reservoirs"

### General Locations of Key Basins



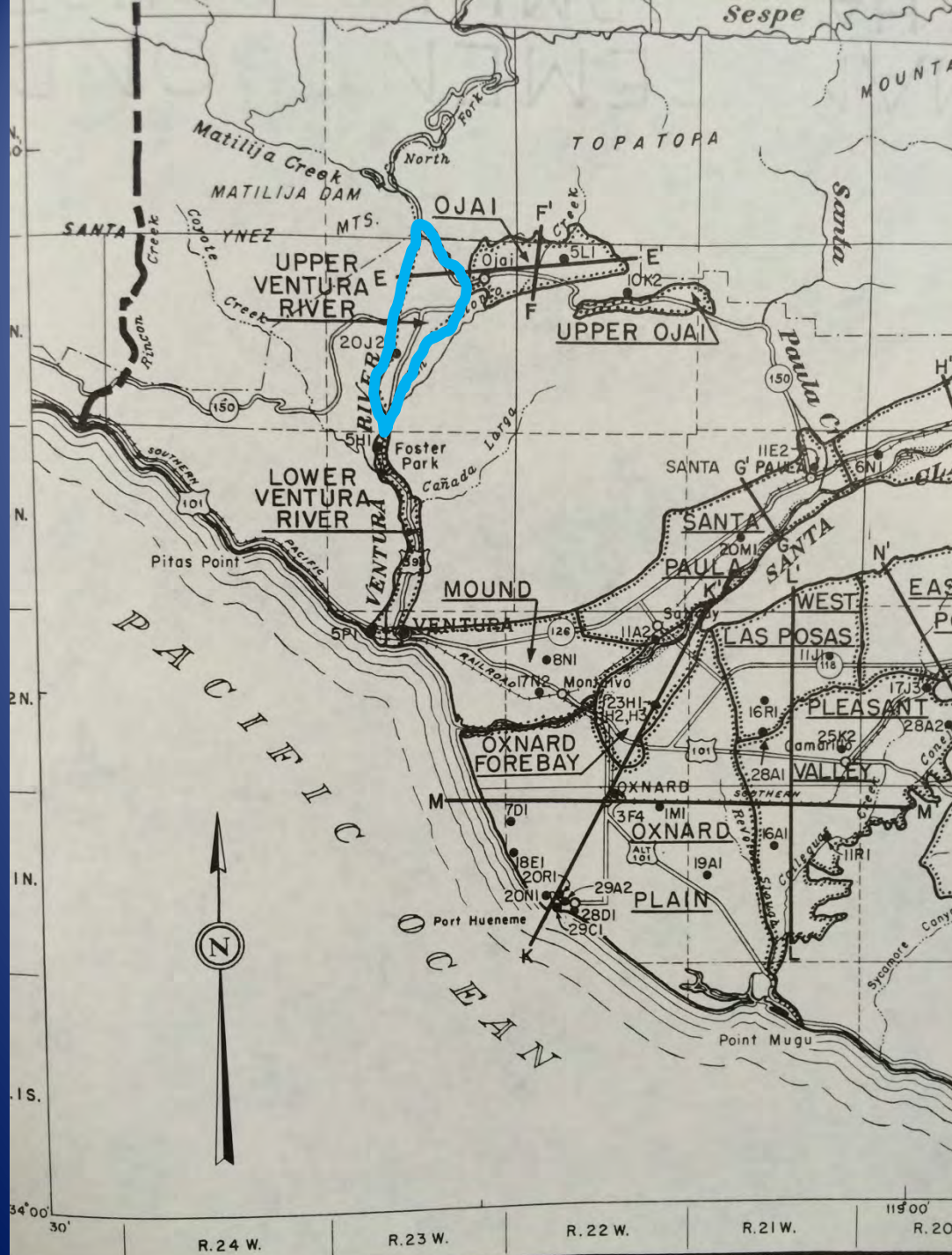
Ventura River  
Underground Reservoir  
appears to follow river gravels only



SWRB, 1953

## Separation of Upper and Lower River Basins

Upper Ventura River Basin  
Extends from Kennedy Narrows  
To Foster Park  
And east to include  
Meiners Oaks and Mira Monte



DWR, 1976

# Planned Utilization of Water Resources In Ventura County

Two separate basins  
Includes portion of  
Lake Casitas  
San Antonio Creek  
Most limits of alluvium

Includes "Islands"





DWR, 2013

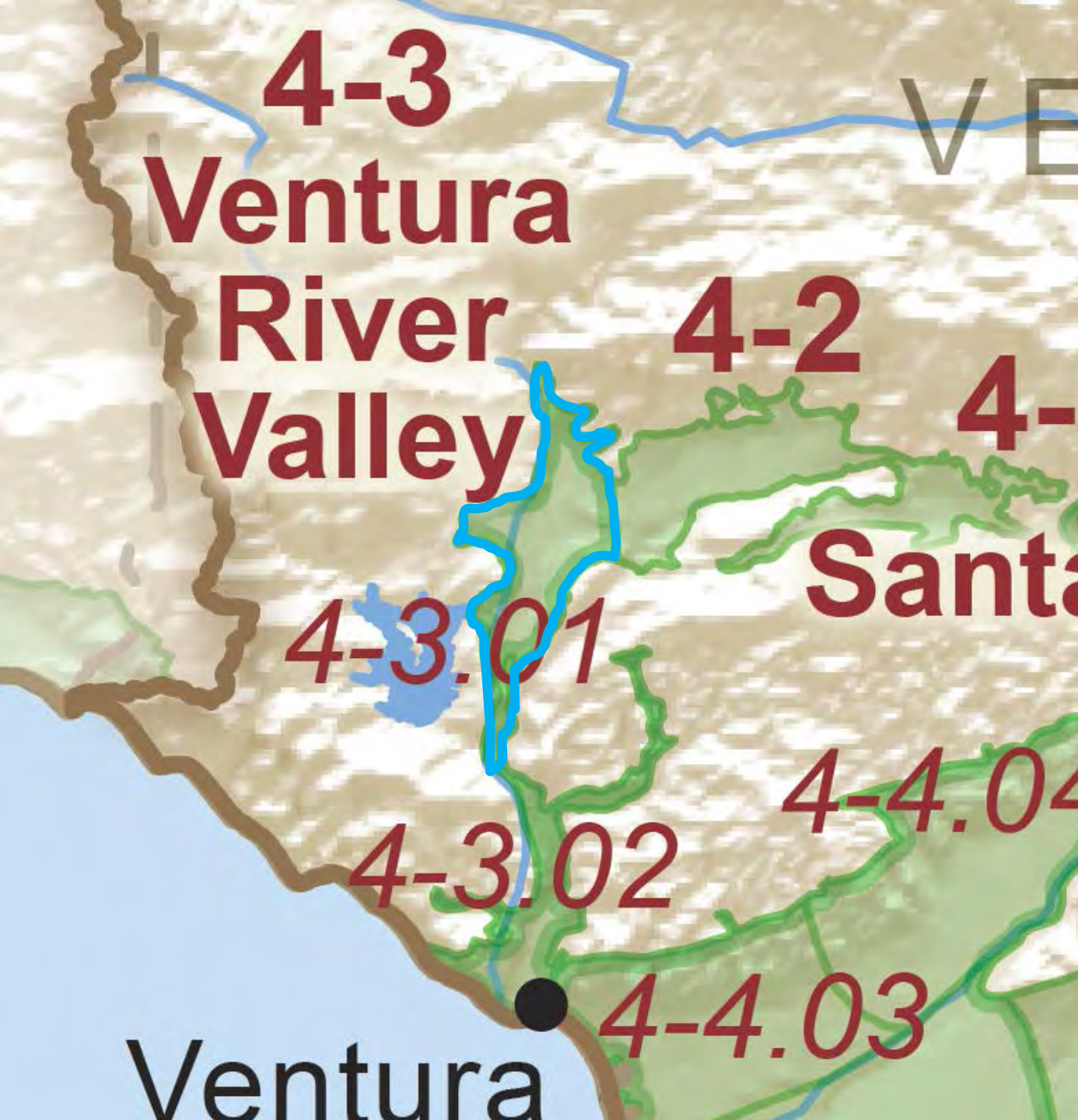
Ventura River Valley  
Groundwater Basin

Two Sub-basins

Cuts off at  
east end along  
North/South boundary  
with Ojai

North of  
Kennedy Narrows  
Toward Matilija Creek  
confluence

Includes portions of  
Rancho Matilija to  
west

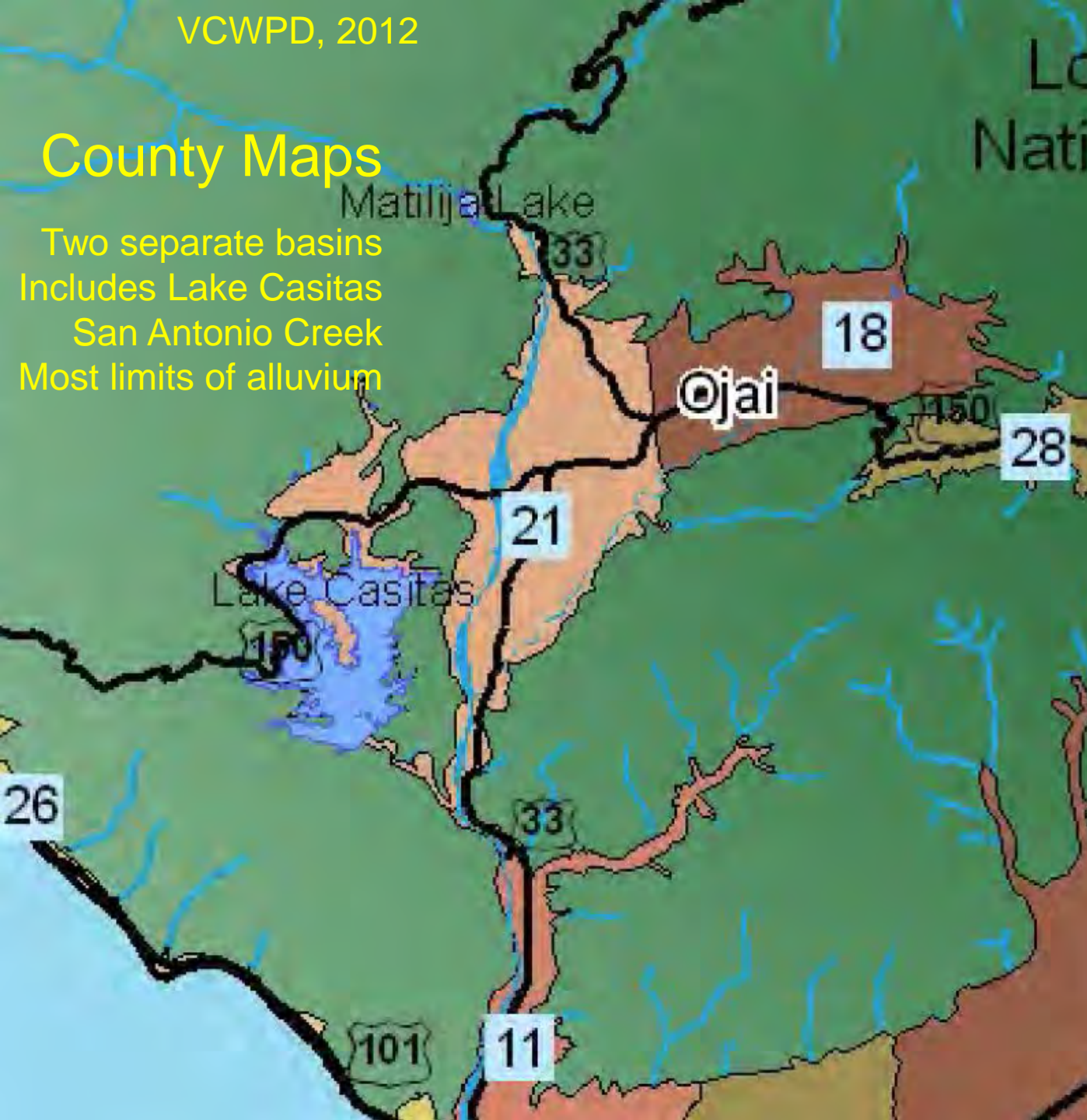




VCWPD, 2012

## County Maps

Two separate basins  
Includes Lake Casitas  
San Antonio Creek  
Most limits of alluvium



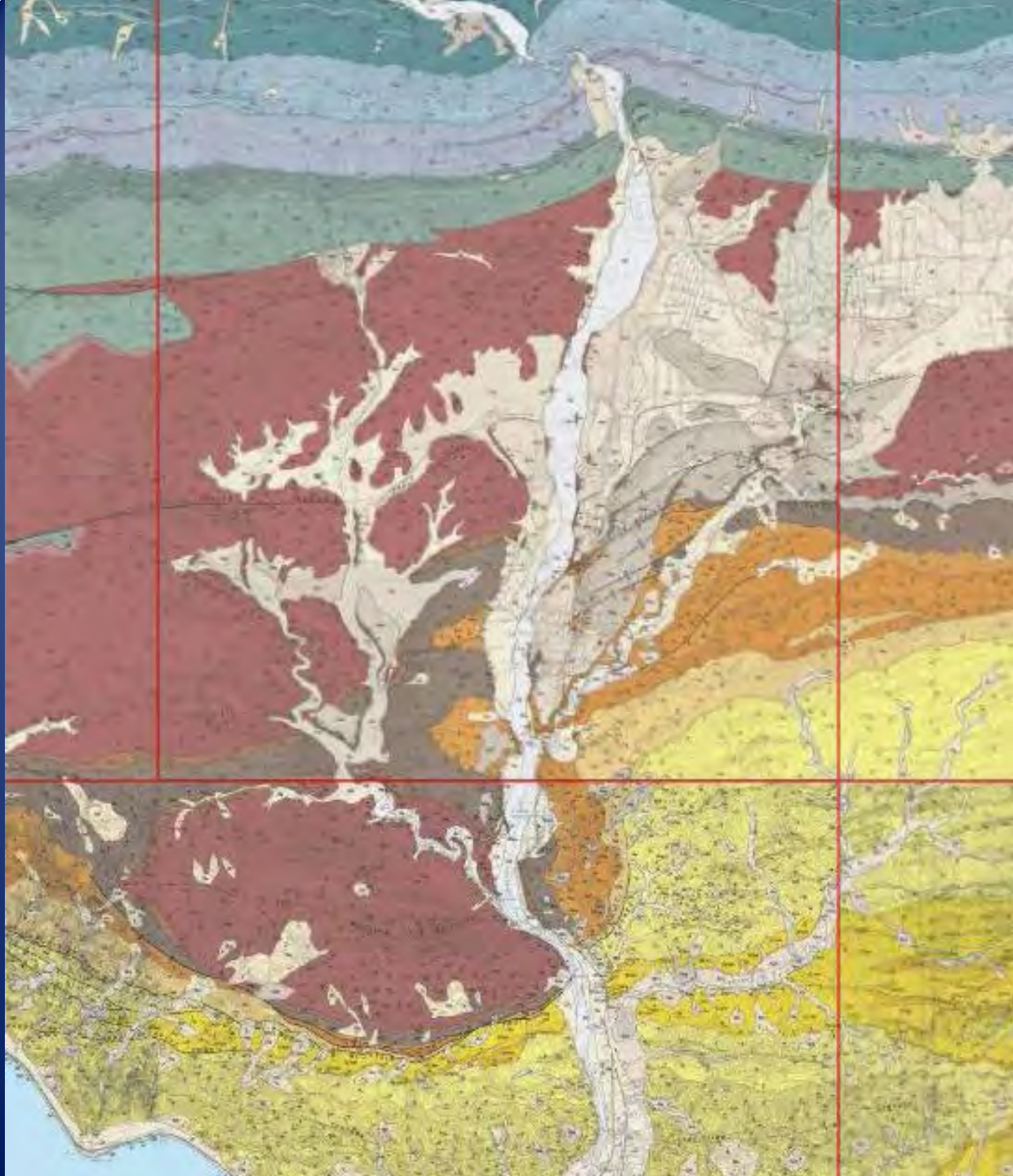
Turner, 1971





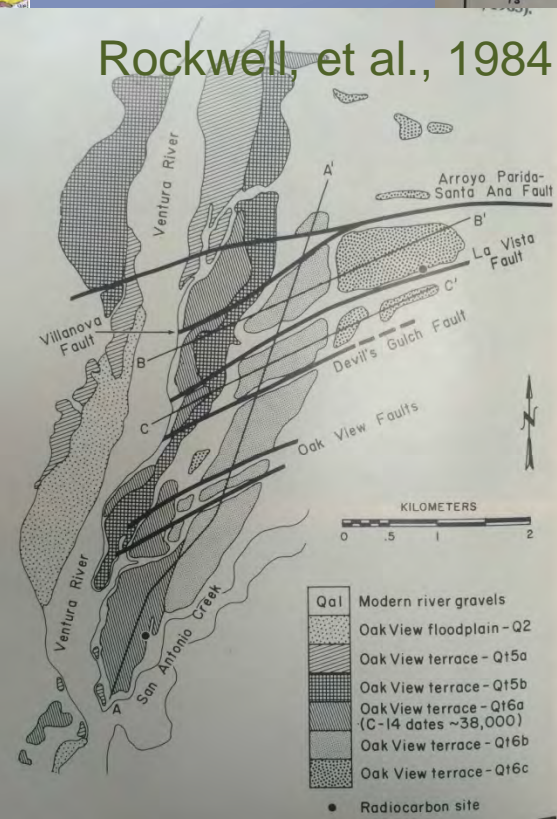
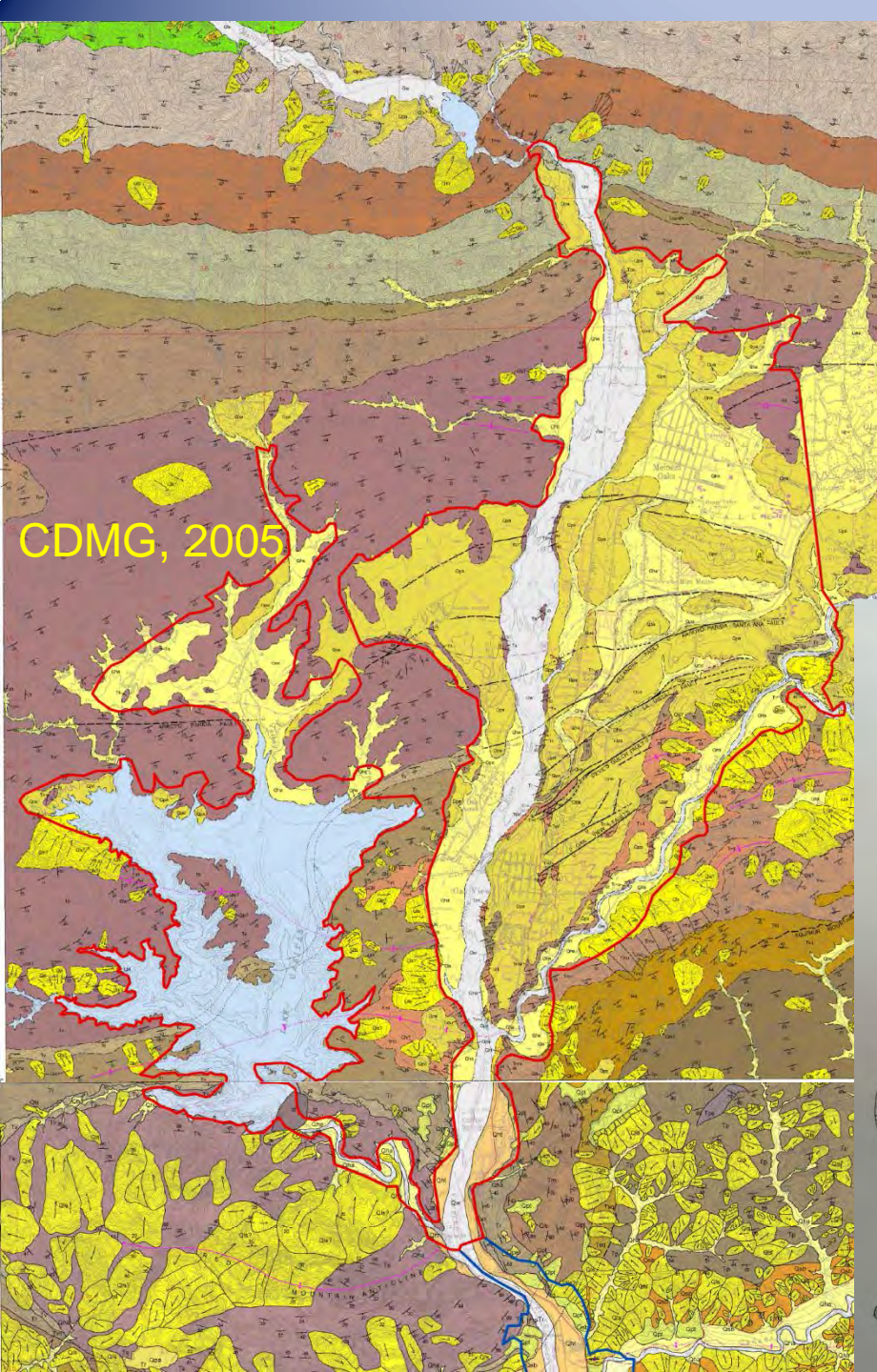


DBS, 2011



Dibblee, 1991...



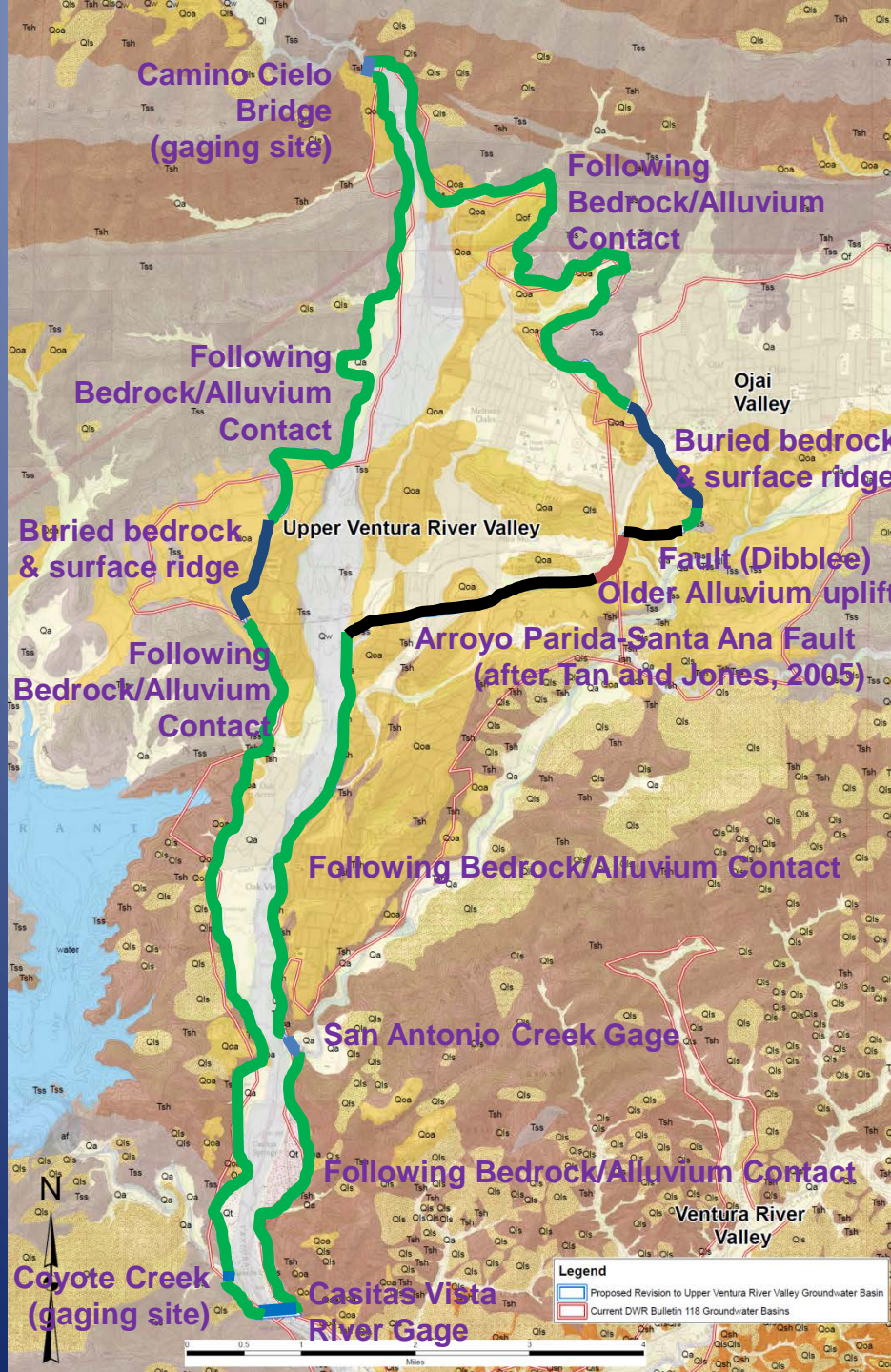


the riv  
soft be  
level o  
lower  
La Vi  
Q16c  
progr  
sition  
the Q  
result  
where  
races  
terra  
fairs  
The  
the p  
terra  
chron  
Q16b  
with  
west  
races  
cove  
gravi  
cene  
the n  
gravi  
sand  
may  
faul  
Vist  
ciate  
ven  
768  
198  
from  
fine  
deve  
sugg  
prio  
accu  
at th  
St  
dep  
cro

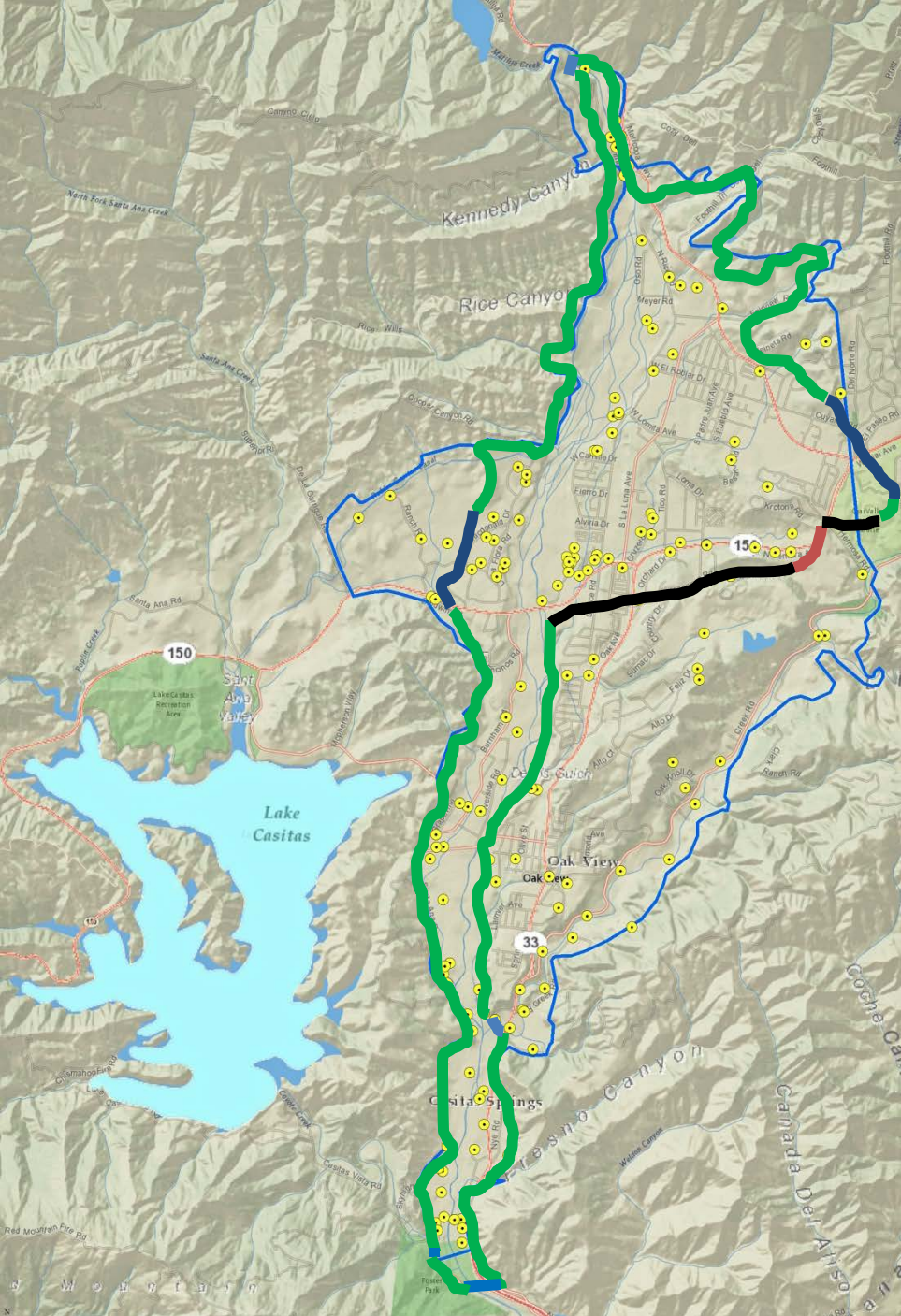


05 January 2016  
DWR Meeting

# Geologic Discussion Revisitation







Who's in....  
.....who's out...

About 40 wells included  
in county-defined UVRB  
would be "out"

No existing,  
Active Production wells  
added to proposed  
revision



**DYNAMIC  
WATERSHED**

**BASIN BOUNDARIES SUBJECT TO CHANGE**